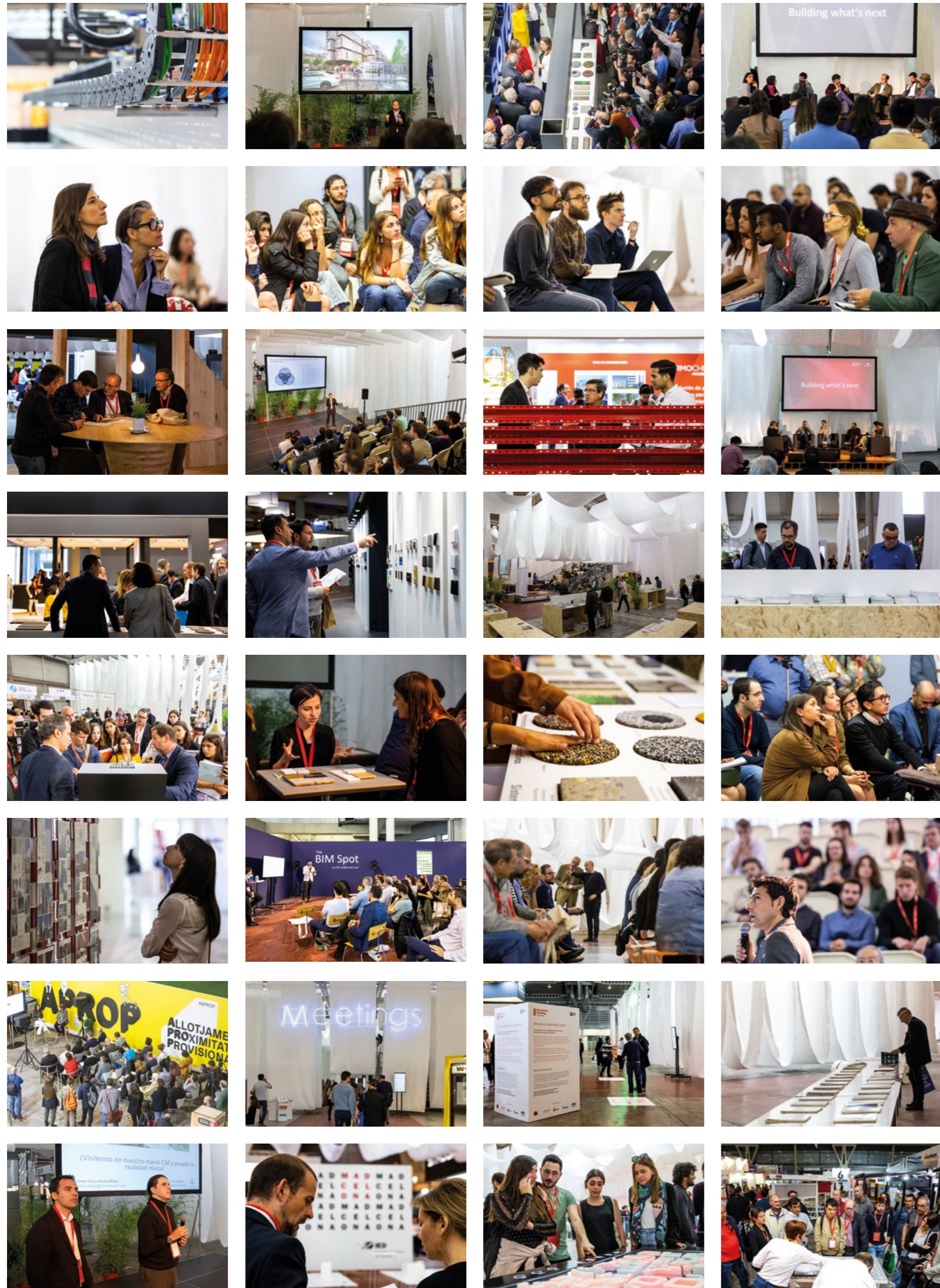


Building what's next

Memory 2019



Building What's Next	04
The Arenas	10
Future Arena	12
Future House	16
Startup Village	22
Technical Corner	24
Showroom	26
Talks Arena	30
Meetings Arena	38
Industry Arena	46
The Professional Spot	52
Sustainable Solutions	54
The BIM Spot	56
Side Events	58
Barcelona Building Construmat Awards	60
Towards a more sustainable event	64
Figures	66
Partners	68

“BBConstrumat is the main benchmark for a sector which, at the moment, is once again a driving force for our economy and, as such, points to innovation, digitalisation and connectivity as the keys to sustainable growth.”

Ana Vallés
President of BBConstrumat
and the Sorigué Group

Building what's next

The 21st edition of the Barcelona Building Construmat trade show represented the consolidation of the value proposition launched in 2015. A value proposition based on innovation, digitalisation and sustainability as the driving forces of change and transformation within the Spanish construction sector.

It involved four days of intense activity during which BBConstrumat set trends with its ephemeral architectural design and zero-waste initiatives, indicating the path to be followed by the sector so as to contribute to environmental balance.

Barcelona Building Construmat celebrated its 40th anniversary in 2019, highlighting its status as a leading trade fair event with significant support from both exhibitors and visitors. A total of 422 direct exhibitors and more than 54,000 visitors provided proof of the success of Fira de Barcelona's construction trade show.

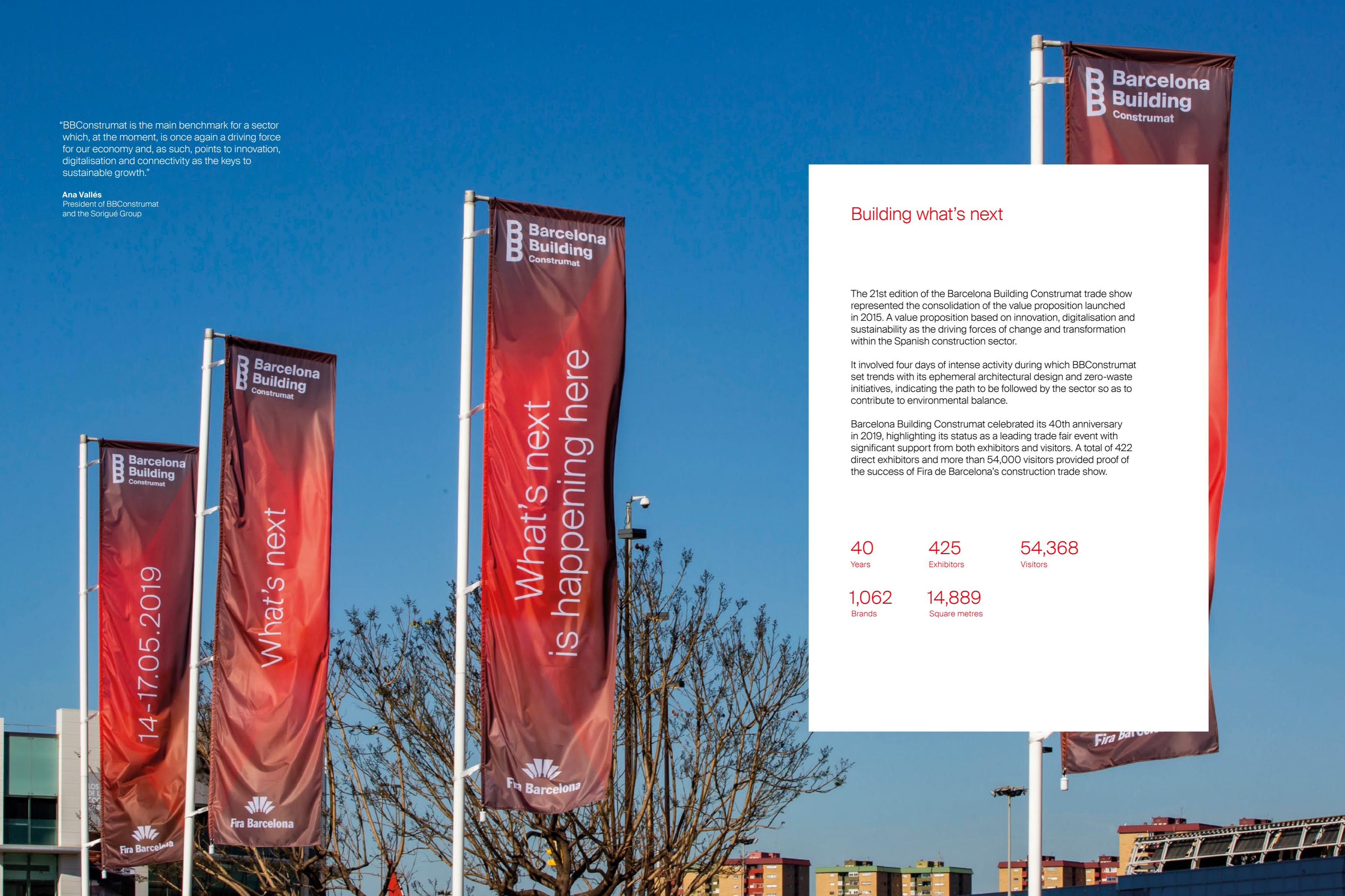
40
Years

425
Exhibitors

54,368
Visitors

1,062
Brands

14,889
Square metres



B Barcelona
Building
Construmat


Fira Barcelona

Building what's next

14-17.05.2019

www.construmat.com

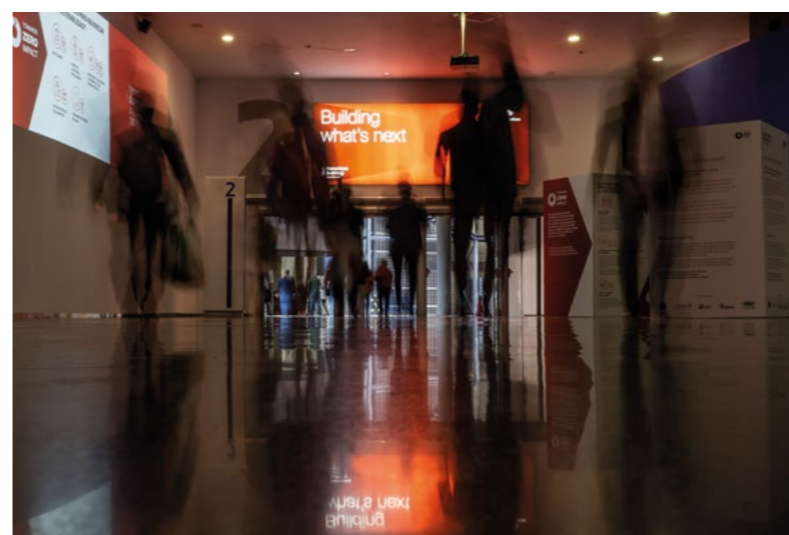
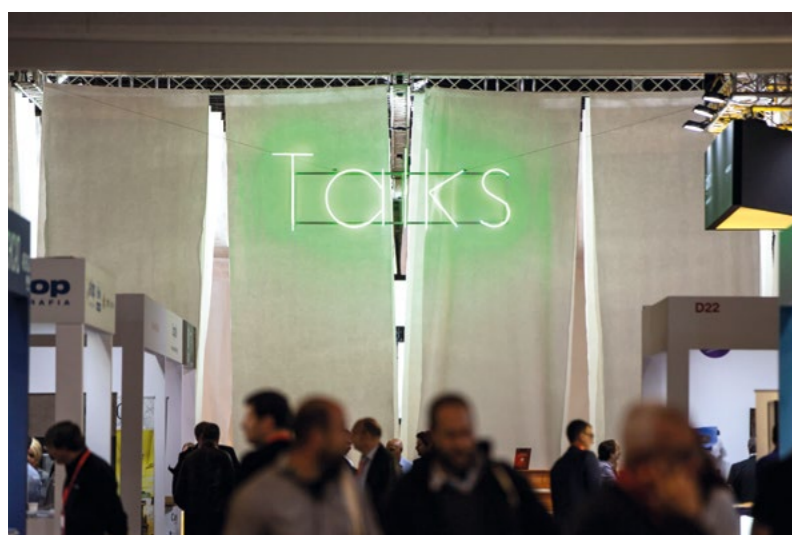
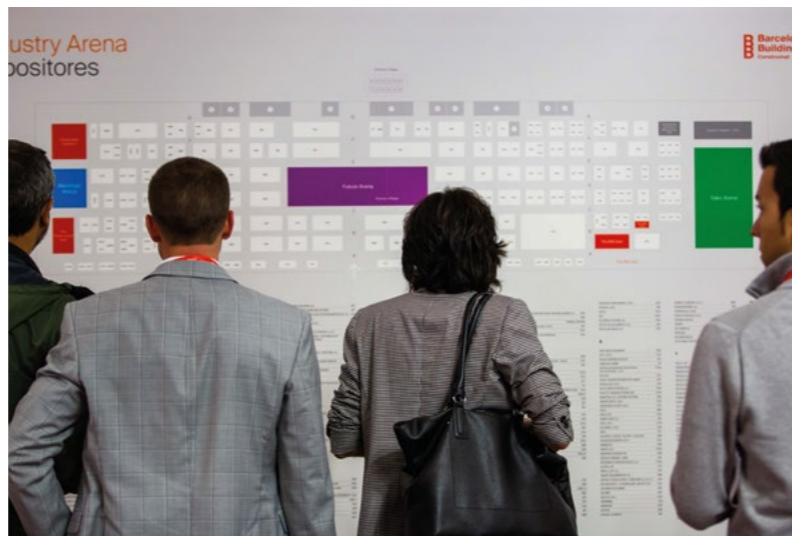
#BBConstrumat

Accés/Accesso/Access

ards a zero impact event

TOWARDS
ZERO
IMPACT





The Arenas

What's next is happening here

Barcelona Building Construmat 2019 is structured around three nuclei: innovation, knowledge and business. These nuclei are reflected in the division of the space into four different arenas:

Innovation

Future Arena

The most disruptive community

Knowledge

Talks Arena

The voices of innovation

Networking

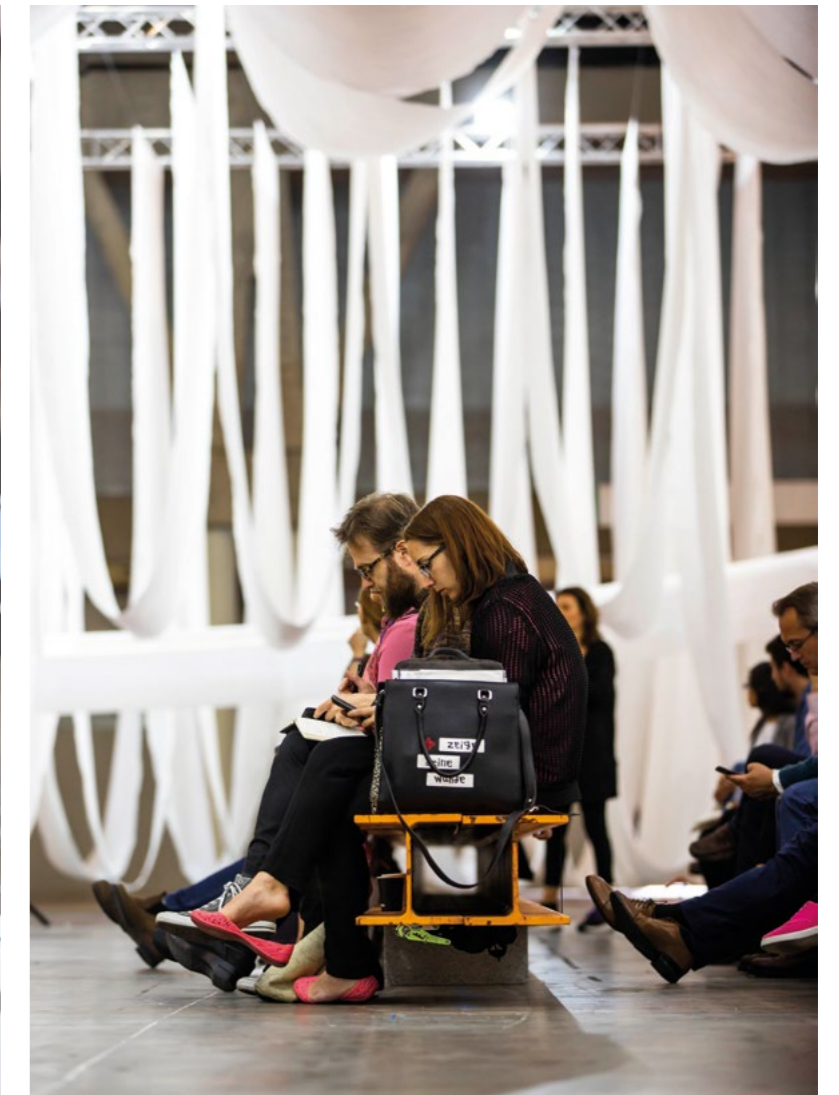
Meetings Arena

Connecting professionals from the sector

Business

Industry Arena

The great exhibition



“BBConstrumat is revamping the way we design our houses and the way we design our buildings.”

Areti Markopoulou

Academic Director of the IAAC in Barcelona and
Director of the Advanced Architecture Group

Future Arena

The most disruptive community

With 2,000 square metres, unique in Europe, devoted to experimenting with innovation, new technologies and new materials. The Future Arena is the meeting point to find out the latest trends, a place where the most transformational ideas in the sector can be touched, felt and experienced.

The Internet of Things, digital printing, start-up proposals, virtual reality and the BIM are just some of the players that bring us closer to innovation.

A space with the best partners, divided into four areas:

Future House
Startup Village
Technical Corner
Showroom



“BBConstrumat is committed to innovation and sustainability. Construction as a solution to the challenges of 21st-century society.”

El Periódico



Future House

Future Arena of BBConstrumat'19 and Future House curated by IAAC Advanced Architecture Group brought together a community of academic and research centers to present novel approaches, solutions and technologies on the construction of our future habitats.

The following five different topics were the Main Axes for the development of Future House:

1. **Bio & Advanced Materials – IAAC**
2. **Robotics & Advanced Construction**
3. **IoT & Big Data**
4. **BIM / AR / VR / MR**
5. **Circular Economy**

Curated by:



“Collaborative robots, the climate emergency and the circular economy feature at BBConstrumat.”

Plataforma Arquitectura

1. Bio & Advanced Materials – IAAC

This section presented, samples of advanced and bio materials, as well as a series of big scale prototypes.



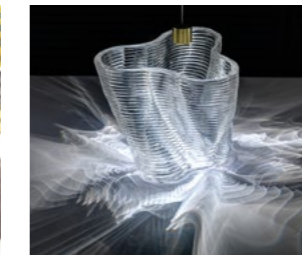
FlectoFold
ITKE

FlectoFold is a modular Elastic Kinetic Facade Shading System made of materialy-graduated FRP integrated with pneumatic cushions that induce elastic bending onto the body, generating movement and transformation.



Lachesis
TUFTS SilkLab

Lachesis are interactive surfaces developed as sensitive textiles that respond to changes caused by the rain, skin contact or emotions by altering their colour. The fabrics absorb and interpret the imbalances that arise inside and outside of our bodies and in our surroundings, through different chemical reactions. These moments, these changes, thereby leave their imprint on the silk, which evolves and transforms over time.



G3DP
MIT Mediated Matter Lab

G3DP is a manufacturing platform which explores the possibility of creating architectural components that are both structurally sound, informed regarding the environment and have the potential to contain and allow the matter to flow through them.

“Energy efficiency and new technologies, the keys to BBConstrumat.”

Ara



Synapse
IAAC Advanced Architecture Group

Synapse is an interactive device that uses nanomaterials, data and artificial intelligence-based strategies to record and analyse people's behaviour in buildings and cities.



Digital Matter
IAAC Advanced Architecture Group

Selected projects from IAAC's Digital Matter Research Laboratory, investigating the implementation of intelligent materials together with sensitive technologies for the creation of dynamic constructed spaces that respond, move, breathe, change in shape and state. The projects explore architecture that responds and adapts to the continuous flows of the environment as well as the needs of the user, getting closer to living organisms and acting accordingly.



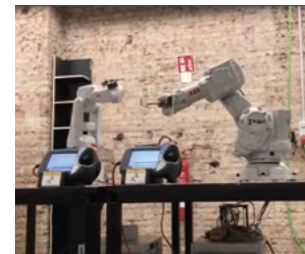
FabTextiles
Fab Lab Barcelona

The FabTextiles Materials Laboratory has been developing cultivated, biodegradable, natural and biological materials and dyes. The research agenda includes: bioplastics, dyeing with bacteria, the use of food waste skins, leather and fungal cultures, kombucha bacterial leather and more. Custom-made materials can be designed to work in the way we wish and live as long as we need them to. The implementation of time in the design allows us to determine how long the object will live before it is recycled or degrades.



2. Robotics & Advanced Construction

This section presented how Automation and Robotics are impacting the construction sector opening up possibilities of low-cost sustainable housing constructions. The projects presented explore different technologies of robotic fabrication and monitoring, on site construction, human-machine interaction and automated crafts.



Co-working Robots
IAAC Advanced Architecture Group

In this installation, two robotic arms performed a live demonstration of creating architectural elements. The robots were programmed to perform cooperative autonomous behaviors.



3D Printed Earth-based Architecture
IAAC Advanced Architecture Group

Digital Adobe is an innovative research agenda oriented to producing architectural solutions with natural materials and additive manufacturing or 3d printing. The technology enables to customize the form of a building on multiple scales allowing to create highly performative structural and passive/climatic behavior.



Minibuilders
IAAC Advanced Architecture Group

This project addresses the problem of scalability limitations in construction robotics which is applied in the field of architecture. As an alternative to the implementation of a large machine, Minibuilders proposes the development of a series of small-scale construction robots, each capable of performing a different task and linked to the distinct construction phases, finally working together to implement a unique structural result which is much larger than the robots themselves.



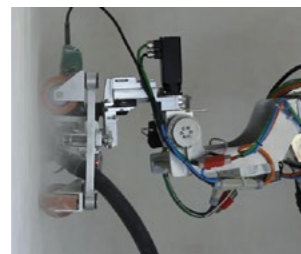
Musical Robotic Façade
IAAC Advanced Architecture Group, Ceràmica Cumella

By applying an algorithm designed by the IAAC, a robot was able to transform a musical input into carvings on the ceramic bricks that cover the façade of the Ohla Boutique Hotels. The music played on the ceramics is the album "Recomposed by Max Richter: Vivaldi's Four Seasons", published in 2012 by Deutsche Grammophon.



MoRFES - Mobile Robotic Fabrication Eco-System
ICD, University of Stuttgart

MoRFES is a process involving the fabrication of traction filament structures that uses a collaborative system of three robots of two distinct species. These analyse the relationships between organisms and their environment, in which the organisms are machines and the environment is the construction site.



Bots2Rec
Eurecat

The aim of the project is to introduce autonomous robots in real building renovation environments for the removal of asbestos. The Bots2Rec solution consists of multiple robotic arms equipped with abrasive and suction tools that remove asbestos autonomously. Bots2Rec also has a system that allows the easy programming of tasks, automated monitoring of human processes and remote control.



Cyber Green Voltaic
IAAC Advanced Architecture Group, Amaïsys Technologies, Secartys

Cyber Green Voltaics uses 3D printed building techniques to create green walls which generate renewable energy on an urban scale. As part of sustainable construction and the use of clean energy, the project aims to implement advanced technologies to provide tools for new efficient and sustainable models for the construction and energy sectors.



3. IoT & Big Data

The section presented new software and hardware that expand the possibilities of Big data and the Internet of Things (IoT), connecting objects, designers and users in spatial experiences. From urban simulators for participatory urban planning to user interfaces driven by blockchain technologies, the projects presented pave the way for solutions regarding population growth, city planning and housing problems.



Google Urbanism
Strelka Institute

A project that proposes a collaboration between Google and cities through a strategy of speculative expansion for Google in physical space, starting with the joint creation of a new type of "public license" in its existing digital infrastructure, and through which "access to the presence of users" in public spaces could generate an economic return for the city.



DOMA
Strelka Institute

DOMA is an intelligent contract-based community housing system that produces more equitable conditions for the precarious post-Soviet urban platform for shared housing and welfare.



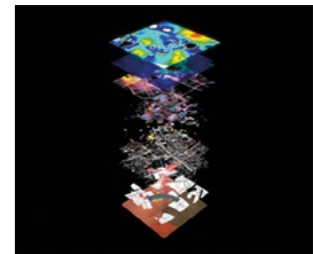
Phi
Strelka Institute

Taking advantage of recent developments in blockchain networks and cryptocurrencies, Phi proposes a digital jurisdiction and platform focused on using peer-to-peer networks to distribute renewable energy resources in residential neighborhoods.



Accommodation Platform
Strelka KB

A new platform for implementing guidelines and which transforms the depth and complexity of the standards framework into an online tool to support future planning decisions and the creation of accurate technical standards for each development site.



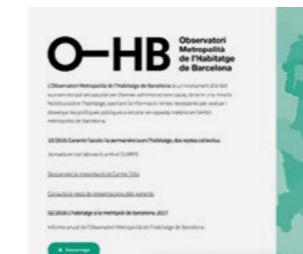
ATOLL
Strelka Institute

Atoll is an alternative platform for urban design and governance propelled by deep learning. It creates urban information models based on a categorical logic, not informed by the traditional modelling techniques but rather by a Discriminatory Neural Network, a new language for the city.



Internet of Buildings
Master in City & Technology IAAC

Internet of Buildings explores the future of our cities by defining new methodologies for building design in the digital age, as well as visualising the inherent benefits that may arise from redefining "how" and "why" built structures communicate with each other.



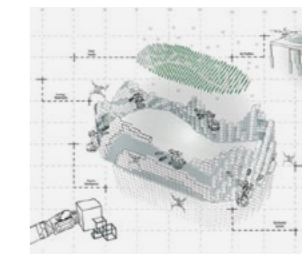
Metropolitan Housing Observatory (OHB in its Catalan initials) of Barcelona
Barcelona City Council

The Barcelona Metropolitan Housing Observatory is an instrument with a supra-municipal scope. It is led by several administrations capable of having a holistic vision of housing, providing the information and tools necessary to evaluate and design public policies in order to address this issue in the Barcelona Metropolitan Area.



Smart Microclimate Control
Senseable City Lab

Smart microclimate control uses IoT systems to dynamically control highly localised heating and cooling devices; this enables the design of personalised acclimatisation output which adapts the temperature where people are.



Future House
IAAC Advanced Architecture Group

Future House presents two projects developed at the Institute for Advanced Architecture of Catalonia (IAAC), which analyse how the Internet of Things and Big Data management systems can create a perfect form of interaction between us and the devices around us, redefining and configuring the living spaces of the future.

Phi senseable city lab.::

In collaboration with:



4. BIM / AR / VR / MR

Showcased software and hardware development for real time data-based constructions, as well as for enhanced experiences among users, designers and the built space.



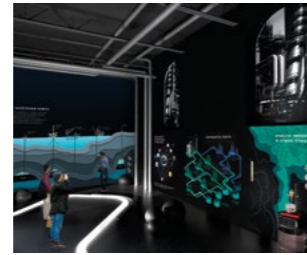
Built2Spec
Project funded by EU H2020

Built2Spec addresses the need to reduce the energy efficiency differences that often arise between the design of a building and its final construction. The use of tools for aerial inspection automates the generation of highly realistic three-dimensional reconstructions that can be used to compare the "as-planned" model, extracted from the BIM system, against the "as-built" model generated by the pilot.



HAToM
Tinkerers Fab Lab Castelldefels

HAToM platform combines digital and physical geospatial data with Virtual Reality tools, to visualize data into a 3D topographic model. Is an effective tool for monitoring and simulating, as well as a useful tool for planning especially for resources management, urban agriculture and security from natural disasters among others.



Kubik - Digital Twin
Tecnalia

Digital Twin is a dynamic, virtual model of the physical structure, powered by the massive amounts of data that a single structure generates around the clock—everything from design specs to equipment parameters and live occupancy data.



Floe
RMIT, Roland Snooks

Floe is a speculative architectural installation which combines robotic manufacturing with interactive holographic instructions for the creations. This interaction between man and machine enables the reduction of costs, time, dangerous aspects and the complexity of the assembly process, without requiring 2D documentation.



Carabanchel Creativa
IED Marid

Carabanchel Creativa allows the user to visualise the public space of the Carabanchel neighbourhood and experience its future transformation in a virtual way before it happens in reality.



AR Projects
IED Madrid, IED Barcelona

Selected projects from IED Madrid based on the use of Augmented Reality interfaces: Parada Solar, Mergo Vehicle, Volta, Ethereal.



5. Circular Economy

From domestic scale plastic recycling DIY machines to prefabricated easy to assemble and disassembly housing units the projects presented in this section showcased the applied principles of Circular Economy in the different scales of our constructions.

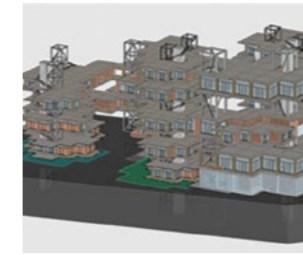
“A space for disruptive innovation and an area for professional services, the two major new features at BBConstrumat 2019.”

CIC Construcción



APROP Homes
Barcelona City Council

APROP Homes (Allotjaments de Proximitat Provisional) is a new model of temporary housing for the city of Barcelona. The structure recycles maritime containers creating modular housing units that are fast to assemble and provide quality living spaces for affordable prices. The housing units can be disassembled, transport and assembly again in new locations according to the housing needs of the city.



Ecologically Advanced Buildings
IAAC Advanced Architecture Group

The models present a new generation of ecologically advanced building projects, which combine environmental values (wooden structures, ecological materials, energy self-sufficiency) with an adaptive modular and parametric design.



Sustainable Urban Agriculture
IAAC Advanced Architecture Group, Aquapion=RS

Sustainable Urban Agriculture is based on the symbiosis between fish and plants, creating a cycle that converts fish waste into fertiliser for the plants which, in turn, purifies the water in fish tanks.



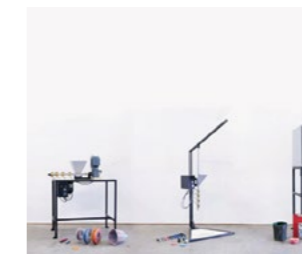
Smart Citizen Kit
Fab Lab Barcelona

The Smart Citizen Kit enables communities to better understand their environment by developing tools for citizens to compile and share data with one another. Local communities can use Smart Citizen to create local noise and air quality maps in order to raise awareness and find solutions to problems that concern the community.



Good Wood - Robotic Recycling
IAAC Advanced Architecture Group

Good Wood - Robotic Recycling researches how to recycle wood waste, using robotics to optimise and manipulate the parts and to create new structures.



Domestic Plastic Recycling System
Fab City & Precious Plastic

Precious Plastic is a global community that provides open source knowledge, techniques and tools for domestic plastic recycle. The four machines, operate with recycled plastic that can then be turned into objects. The machines include open source blueprints and tutorials, so that anyone can access, download and build them for domestic object creation by plastic recycling.



“BBConstrumat is committed to innovation and sustainable growth.”

ABC

Startup Village

In this space we welcomed smart construction showing projects from the best emerging startups

Curated by:

LiquiD
Flow to the digital age



HONEXT



Aerial Insights

Aerial Insights uses drones and proprietary technology to provide the most advanced measuring and tracking tools of the market. It generates precise topographical reconstructions in hours, at a fraction of the cost, without technical complexity and fully integrating into your current workflows.

HONEXT

A new generation of high-end, plant-based recovered materials, with a completely circular processing model. They collect cellulose waste from the paper industry and process it locally to transform this compound into a fibreboard. Through an innovative process inspired by nature, using enzymes to bind cellulose fibres together. The result is a robust product with the smallest possible carbon footprint.

Civigner

Creators of WEB CAD GIS 3D platform that has an application in industrial processes, civil engineering, construction, mining and ultimately in any process that needs CAD GIS 3D tools to design, build and manage technical processes and projects. It provides a work environment via the website that allows several people to work in a collaborative environment in projects in which it is necessary to handle graphic information from various sources, among them autoCAD and Microstation.

Deep Solutions

PIX2MAP (pix2map.com) specializes in aerial imagery and offers a free photogrammetry tool generating orthophotos, upon which visual detectors are applied to extract actionable information. One success story is the enormous cost reduction of photovoltaic power plant maintenance, thanks to Deep Learning.



“The companies, constructors and architects that have visited us are seeking innovative solutions that are already available for incorporation into their projects.”

Heboo - Startup Village



Heeaboo

A company which develops innovative solutions for water and energy improvements in buildings. The team is made up of engineers and designers who create innovative and sustainable solutions to increase water and energy efficiency in buildings.

SAALG

Daarwin is an online software that, through the use of inverse analysis of the data obtained with the instrumentation on site in real time, obtains a reliable representation of the behaviour of the terrain, thereby maximising profitability and minimising the risk in construction projects by anticipating geotechnical uncertainties.

Sablono GmbH

Sablono's online platform is designed for work coordination and data analytics in large construction projects. It's used by general contractors and other members of the supply chain to improve the entire construction project, from planning to commissioning. Sablono is also used as a production system for prefabricated bathrooms and façade panels.

Worldsensing

Learn how to go paperless and automatically list, organize, prioritize, document and complete finishing tasks through a demo of our app with a Finishing Tasks feature.

Stupendastic

Professionals in the construction sector and developers need tools that improve communication with the final customer (future owners) during the construction period of an asset that represents one of the largest investments they will make in their lives. The audiovisual monitoring of the work allows the different phases of a construction to be displayed and to know how from the comfort of the office how the project is developing.

NWW

New World Wind designs, manufactures and distributes a unique biomorphic Wind turbine in a shape of a tree. The WindTree is specially designed for smart cities to catch urban wind, from its slightest breeze and produce local Electricity. Besides, New World Wind has recently produced the first hybrid eco friendly solution, the Windbush, combining Wind Power and Solar Power.

Steinn Kapital

Participative technological platform. Steinn Kapital is a construction company that uses alternative financing such as collective investment to promote the construction and/or refurbishment of different buildings. Thanks to this alternative financing, purchasing power can be given to small investors who until now could not invest in the construction sector.

PHC - Passiv House Conception

Passiv house Conception sarl specialises in the construction and sale of PSE blocks. Blocks manufactured in France by a company with more than 30 years of experience and allowing a perfect insulation and waterproofing of the house. They are designed to resist earthquakes and there is no need for heating or air conditioning; the temperature will always be between 19 and 23°C. The blocks are fully in line with the passivhaus standard. They are some of the first blocks that have 45- and 95-degree angles, which prevents the waste of air.

Technical Corner Programme

Projects and good practices explained by pioneering companies selected by our technical committee.

14.05.2019

10:30 am - 11:00 am
Global Mobility: Workers travelling to conduct international projects: immigration, labour and fiscal aspects

Montserrat Feliu
FELIU N&I - Partner-Director - Manresa - Spain

11:00 am - 11:30 am
Renovation of pipeline systems made from all kinds of materials

Javier Yagüe
Hidrotec Sanejament - CEO - Rubí - Spain

12:00 pm - 12:30 pm
Social housing standards of the Institut Català del Sòl (Catalan Land Institute)

Carles Mas
Institut Català del Sòl - Project Coordination - Barcelona - Spain

José Luis Martín
Institut Català del Sòl - Barcelona - Spain

12:30 pm - 1:00 pm
The efficient solution for lightweight insulating screeds

Xavier Rius
PROMSA - Paving Department Manager - Sant Vicenç dels Horts - Spain

3:00 pm - 3:15 pm
Flectofold

Saman Saffarian
ITKE University of Stuttgart - Innochain - Prague - Czech Republic

3:15 pm - 3:30 pm
Graphene Architecture

Nikol Kirova
IAAC - Student - Barcelona - Spain

3:30 pm - 3:45 pm
Robotics and Advanced Constructions

Àlexandre Dubor
IAAC - Architect and Professor - Barcelona - Spain

3:45 pm - 4:00 pm
Autonomous robots in construction

Daniel Serrano
EURECAT - Barcelona - Spain

4:00 pm - 4:15 pm
APROP Homes

Antonio Font Ferrer
Barcelona City Council - Social Innovation Advisor - Barcelona - Spain

4:15 pm - 4:30 pm
Kubik & Digital Twin

Jose Manuel Olaizola
Tecnalia / Smart Building and Cities - Project Manager - Zamudio - Spain

4:30 pm - 4:45 pm
Metropolitan Housing Observatory (OHB in its Catalan initials) of Barcelona

Anna Verges
Metropolitan Housing Observatory of Barcelona - Director - Barcelona - Spain

4:45 pm - 5:00 pm
Doma.city

Maksym Rokmaniko
Strelka - Nomadic

5:00 pm - 5:15 pm
PHI

Aliaksandra Smirnova
Strelka - Researcher - Barcelona - Spain

5:15 pm - 5:30 pm
Internet of Buildings

Alex Mademochoritis
IAAC - Coordinator - Barcelona - Spain

5:30 pm - 5:45 pm
MADCELONA

Jose Fran Garcia
IED City Lab - Barcelona - Spain

5:45 pm - 6:00 pm
New realities that are shaping our future environments

Gus Zuniga
Supercitys - Barcelona - Spain

15.05.2019

10:00 am - 10:30 am
Nodoled

Benjamín Bentura
LED 5V, S.L. - Founding Partner - Ejea de los Caballeros

10:30 am - 11:00 am
100 iO: Smart projects, traditional installation

Luis Borja
Simon - Senior Corporate Product Manager S&S - Barcelona - Spain

11:00 am - 12:00 pm
Advanced analytics potential in the infrastructure sector in Spain

Antonio de Gregorio
McKinsey & Company - Partner - Madrid - Spain

12:00 pm - 12:30 pm
Civil Works: Ready for the new society? The CEO's roadmap for leading the digital transformation

Miguel Charneco
Bertelsmann (ARVATO SCM) - International HR Manager at Bertelsmann and TD leader for Arvato SCM Spain - Madrid - Spain

12:30 pm - 1:00 pm
BTV smart parcel service mailboxes managed via the Kuik mobile application.

Eva Villaverde
BTV - General Manager - La Puebla de Alfinden, Zaragoza - Spain

3:00 pm - 3:15 pm
Topography with drones and simpler, cheaper and technically uncomplicated site monitoring, carried out within a few hours

Fernando Navarro
Aerial Insights - CEO - Barcelona - Spain

3:15 pm - 3:30 pm
A new generation of recovered materials

Claudia Carrasco
HONEXT - Business Development - Barcelona - Spain

3:30 pm - 3:45 pm
Access to web tools to solve 3D CAD GIS needs in construction and civil engineering.

Antonio Pérez
Civigner s.l. - CEO/CTO - Gijón - Spain

3:45 pm - 4:00 pm
Deep Solutions

Óscar Serra
Deep Solutions - Data Scientist - Barcelona - Spain

4:15 pm - 4:30 pm
PHC

Johanna Leouzon
Passiv House Conception - France

4:30 pm - 4:45 pm
Digital Process Management in large-scale construction projects.

Florian Meichsner
Sablono GmbH - Berlin - Germany

4:45 pm - 5:00 pm
Real-time construction site control with DAARWIN

Ignasi Aiguier
SAALG Geomechanics - CTO - Barcelona, Catalonia - Spain

5:00 pm - 5:15 pm
Finishing Tasks_Digitalisation of Acabados Digitalisation

Jeremy Fraissinet
Worldsensing - Key Account Director - Barcelona - Spain

5:15 pm - 5:30 pm
Site audiovisual monitoring and marketing for architects

Xavi Alba Sendra
Stupendastic

5:30 pm - 5:45 pm
Benefits of using Blockchain

Jose María Soler Balaguer
Steinn Kapital

16.05.2019

10:00 am - 10:30 am
The SAP S/4H solution for construction and engineering

Jesús Cervera
Sothis - Product Manager SAP Concrete 3.0 - Valencia - Spain

10:30 am - 11:00 am
Construfire: New method and software to reduce costs and improve fire resistance in steel structures for the construction industry.

Albert Jimenez
Construsoft - Structural Engineer Manager for the R&D Department and Structural Calculation Software - Sant Andreu de la Barca - Spain

11:00 am - 11:30 am
Cessar: In situ measurement and prediction of the compressive strength of concrete

Miriam Labrado
IM2 multi-disciplinary mathematical Institute, Polytechnic University of Valencia (UPV) - Higher Research Technique - Valencia - Spain

11:30 am - 12:00 pm
Bridge monitoring system for the verification of structural health on a global scale and the quantification of its structural risk index

Francesc Ribes
IDVIA 2020 HORIZONTE 2020, SL - Project Execution Manager - Valencia - Spain

12:00 pm - 12:30 pm
3D Laser Scanning

Oscar Pascual
Gesfoto - 3D Laser Scanning Manager - Barcelona - Spain

12:30 pm - 1:00 pm
Animation and presentation of BIM projects with Lumion 9

Eugenio Donado Megía
Lumion SL - CEO of Lumion Spain - Valencia - Spain

3:00 pm - 3:30 pm
Progress: Provisions for Greater Reuse of Steel Structures*

Petr Hradil
VTT Technical Research Centre of Finland - Senior Scientist - Espoo - Finland

***2019 Barcelona Building Construmat Award**
In the innovative product or material category

3:30 pm - 4:00 pm
Sustainable Wood Construction. Smart tool for the selection of wood products for the construction industry

Marta Conde
University of Cordoba - Full Professor - Cordoba - Spain

4:00 pm - 4:30 pm
Therapeutic environments that improve people's quality of life and well-being

Albert Cervera
SIMBIOTIA - CEO - Barcelona - Spain

17.05.2019

10:00 am - 10:30 am
EduBim: When adapting to BIM it is simple, accessible and fun

Ioanna Alsasua
SIMBIM Solutions - COO | Senior BIM Consultant - Barcelona - Spain

10:30 am - 11:00 am
Trimble Connect: Traceability and BIM communication from design to construction

David Virtos
Construsoft S.L. - Manager of the Constructors and Solutions Department for Industrial Plants - Barcelona - Spain

Jose Cosculluela Millas
Construsoft

11:00 am - 11:30 am
PIM Methodology - Hispalyt. The Digital Transformation of the Industry

Ángel Maestro
24Studio

11:30 am - 12:00 pm
BIM Integrator: BIM integration with ERP

Eduardo Santana
IBERMATICA - Microsoft Business Cloud Advisor - Madrid - Spain

12:00 pm - 12:30 pm
The industrialisation of luxury housing

Rubén Navarro
Casas inHAUS - Business Development - Architect - Almussafes - Spain

12:30 pm - 1:00 pm
Industrial window manufacturing 4.0

Juan Carlos Castaño
K-LINE - General Manager - Parets del Vallès (Barcelona) - Spain

Showroom

An exhibition that gave visibility to the most ground-breaking products and materials, selected by the technical committee from among all the participating companies.

Sustainable ceramic permeable paving for urban spaces. SUD Systems
Trencadís de Sempre, SL

Innovative paving for SUDs. It reuses obsolete ceramic material with low commercial value. It has highly permeable. It prevents problems due to run-off from urban paving. High acceptance among users and citizens. It enables rainwater to be captured, making it possible to store it and reuse it later.

Barcelona Building Construmat 2019 Award
in the innovative product or material category



BauSATEi® - Thermal Enclosure for Façades
Baupanel System SL

BauSATEi® is an innovative, vandal-resistant SATE system that adds structural strength to the building and simplifies installation. It is environmentally friendly and provides excellent energy savings. It renews the appearance of the façade and increases the value of the property. It doesn't reduce the useful surface and contributes to acoustic insulation.



IP54 1 button Wireless Switch
Buyled Led Lighting SL

Wireless switch with a range of up to 600 metres. The installation is simple and without the need for wires or special wiring systems, guaranteeing installation where it is impossible to run cables through or in which a wireless installation is more convenient, thus saving on high installation costs.



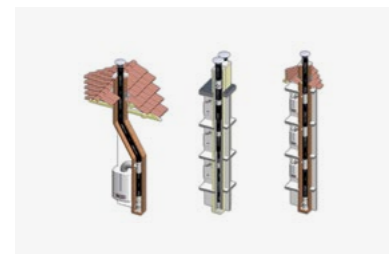
VOLCALIS - Mineral insulation
Argex

Volcalis mineral wool is an ecological product based on sand and a biological-based binder, with high thermal and acoustic performances. This is fire-resistant insulation that is soft on the touch, easy to handle and highly compressible, simplifying its transport, cutting and installation. Volcalis complies with the highest standards for indoor air quality assessments.



Persa Solar Light Tube
Chatron, Lda

The Persa Solar Light Tube kit is designed to operate during the day in the traditional manner by capturing and introducing natural light into the space to be illuminated. At the same time, the photovoltaic kit is fully integrated into the structure of the solar tube during the day.



FuranFlex
Kompozitor Plastics Development Ltd.

The FuranFlex brand stands out for its exceptional flexibility. It can be installed in smoke ducts and chimneys with even the strangest curves and branches without having to break the walls. All chimneys, regardless of their shape and length, can be hermetically coated without any visible joints with a high-strength steel composite material. Coating the air ventilation systems with FuranFlex® reduces radon concentrations.



NODOLED: Industrial lighting that integrates sensors and communication devices to enable the IoT
LED 5V, S.L.

Industrial LED lighting with the capacity to integrate all kinds of commercial sensors to control the environment and communication devices which enable the creation of a network that transfers data to the cloud.



A bridge monitoring system for the verification of structural health on a global scale and the quantification of the structural risk index.
IDVIA 2020, Horizonte 2020, SL

This is a system for the continuous and real-time determination of the evolution of the mechanical properties and structural integrity of a bridge's critical elements. The system consists of the strategic installation of verification sensors. A bridge monitoring system for the verification of structural health on a global scale and the quantification of the structural risk index.



PROACCESS-10
Promotora Mediterranea-2, S.A. (PROMSA)

Structural concrete specially designed for sites that are difficult to access and with complex vertical and horizontal pumping systems. Its formulation is specially designed to be pumped so as to obtain the desired resistance. It is compatible with (non-metallic) fibres for sites where the reinforcement, including the structural reinforcement, are to be replaced.



Energy-saving and plastic packaging machinery for building materials
Controlpack Systems, S.L.

Technology that takes into account the environmental impact of packaging and offers innovative technology to minimise the amount of plastic material in the packaging (20-60%) in order to achieve energy savings and reduce CO2 emissions, the amount of plastic material sent by road to construction sites and the volume of waste on these sites (approx. 50%).



Centre for Air Treatment (CAT)
MURPROTEC

Centre for Air Treatment (CAT), apart from putting an end to the humidity caused by condensation for good, it provides numerous benefits, as it saves on heating, it automatically airs the house 24 hours a day, prevents radon gas concentrations, reduces draughts, purifies the environment, eliminates allergenic components from the atmosphere, removes mould, eliminates odours, improves chimney flues, etc.



Faro ScanPlan
FARO Spain SLU

ScanPlan is a portable device that dramatically accelerates the process of capturing 2D plans and enables the 2D plans of any building to be visualised. Photos of the details can be included while the files are scanned and exported in DXF format, allowing the 2D map to be directly used without any additional conversion.



PhoneStrip - Acoustic decoupling band for timber constructions
CORRETJA S.L.

Band made of cardboard and sand to improve the acoustic conditions in timber constructions. Manufactured with natural materials with a low environmental impact, with materials that do not harm the users' health and with controlled costs as a result of the versatility of its applications.

Showroom



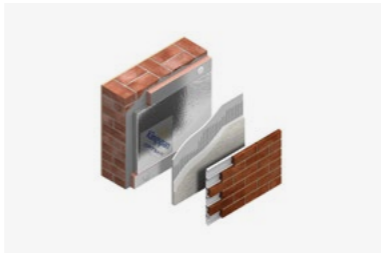
MasterProtect 8000 CI
BASF Construction Chemicals

It enables the repairs of reinforced concrete structures affected by corrosion without removing the coating of the structure and cleaning the reinforcement. It prevents the generation of solid waste as well as noise and dust emissions and allows structures to be repaired in a more sustainable, faster, more durable and more economically advantageous way.



MasterSuna
BASF Construction Chemicals

The first additive for concrete designed to optimise the use of sand. It maximises the use of the extracted natural resources, minimises and even prevents the washing of sands (thereby reducing the waste generated, the associated energy and water consumption as well as the costs) and saves on cement overdoses during the manufacture of concrete required when the sands contain traces of clay.



Kingspan OPTIM-R
Kingspan Insulation SA

Kingspan Insulation has developed OPTIM-R. Kingspan OPTIM-R is a vacuum insulation panel (VIP) that provides insulation performance of up to five times greater than that of commonly used insulators. This is a significant improvement and marks a radical change in thermal performance: the next generation of insulation.



A comprehensive KL-FP hidden-sheet casement with a ScreenBlock solar protection and concealment system
K-LINE The luminous window

Aluminium is very environmentally friendly in its life cycle. 100% recyclable without losing any of its properties, 95% of it can be reused at the end of its life. Obtained from bauxite (the third most abundant natural resource on the planet), 50% of the energy used for its processing is hydroelectric. K-Line contributes to controlling the impact of the building on its environment while creating a healthier interior.



SLATE-LITE
R&D GmbH (Slate-Lite)

Slate-Lite is a type of cladding made of real stone veneers with a 100% natural stone surface. It is only 1.5 mm thick and is fully flexible. Slate-Lite weighs approximately 1.5 kg per m², thus reducing transport costs in comparison with solid stone slabs, and it helps to reduce the degradation of natural resources. Slate-Lite is also available in a translucent version for objects with unique backlighting.



SprayForm System
Hidrotec Sanejament SL

Renovation system for drainpipes and pipelines without the need for any building work, consisting of projecting a special polymer inside, using the old pipe as lost formwork.



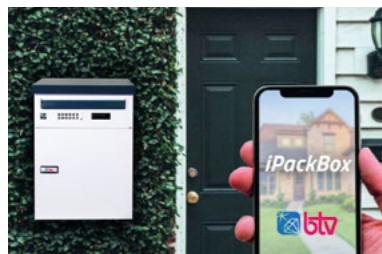
FLEXICEL UF - removable setting for ceramic floors
Flexicel Industrial, S.L.U

Flexible adhesive sheeting for laying a ceramic floor without having to remove the existing one, preventing significant generation of debris. Easy to install and removable piece by piece for the rapid replacement of damaged pieces or decorative changes. Improves the impact noise and reduces the carbon footprint by more than 30% compared to cement.



Plant-based cover with expanded cork agglomerate
Amorim

Sustainable plant-based cover with a high social and environmental impact. As well as its energy-saving component (thermal and acoustic insulation), this type of covering saves on water, given that the incorporation of the cork into the substrate maintains its humidity.



iPackBox: Parcel service mailbox managed via a mobile application
BTV SL

The iPackBox parcel service mailboxes have been designed to resolve what is known as the "last mile" problem, the last logistical stage of the delivery of a package. They can be managed by means of a mobile application, via which the delivery person can make the delivery without the owner of the house having to be at home. The application is compatible with iOS and Android.



Thermochip Housing
Thermochip

Thermochip Housing is the prefabricated panel solution that provides four types of cladding for the entire building envelope. The panels are configured for each project and specific use, providing great benefits with respect to the requirements.



FLEX BEAM
Layher

An ideal system for use as a light structure in a wide range of applications, including suspended scaffolding, cantilevers, walkways and bridge repairs. The rapid assembly of the materials and their optimal use guarantee the cost effectiveness of the scaffolding structures.



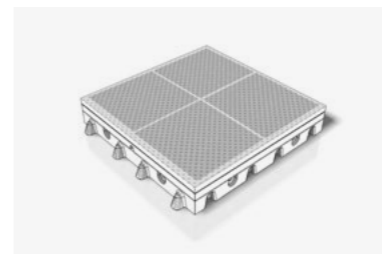
OGUN

Ogun is a platform that integrates the site and its planning with suppliers and their systems. Ogun resolves industrial problems by increasing the planning visibility between the site and its supplies.



Starmodul Joints for the construction of non-welded metallic structures
Starmodul-Cutelart S.L.

Starmodul has patented and manufactures and markets joints for the construction of non-welded metallic structures. With our system we avoid work having to be carried out in the workshop, the on-site assembly is fast and simple and can be executed without qualified personnel, thus avoiding any welding which would be otherwise required. Any structural design can be built.



Platio Solar Pavement
Innovatív Térburkolatfejlesztő KFT. (Platio)

This innovative product consists of a modular and non-conventional energy-generating paving system that integrates progressive and environmentally friendly technologies, thus contributing to the city's energy independence and its sustainability.



In-Wash Roca
Roca Sanitario Spain

Self-cleaning before and after each use, the nozzle offers two types of wash (anal and perineal) and regulates the position, pressure and temperature of the water, offering a personalised experience for each user. Total cleaning complemented by a drying function with a similarly adjustable temperature, guaranteeing full respect and balance for one of the most intimate parts of our body.

"BBConstrumat is an exception and a unique opportunity to bring together all the professionals, companies and agents in the architecture and construction sectors, regardless of their different languages and interests."

Ricardo Devesa
Chief editor of Actar and urbanNext
and professor at the IAAC

Talks Arena

Elevating ideas

Congress

"Logics of innovation and change"

The most innovative and social architecture, capable of innovating and taking on the global challenges posed by today's society featured in the Talks Arena, the space for debate and knowledge at Barcelona Building Construmat, bringing together 3,000 professionals.

The congress unveiled a new expanded style of architecture, based on innovation and experimentation to meet both the social and environmental needs of today's society.

Curated by:
Ricardo Devesa
Chief editor of Actar and urbanNext
and professor at the IAAC



Talks Programme

14.05.2019

Climate Change
10:30 am – 11:00 am
Opening of the congress

Ana Vallés
President of BBConstrumat

Ione Ruete
Director of BBConstrumat

Assumpció Puig
COAC – Dean

Lluís Comerón
CSCAE – President – Barcelona – Spain

Ricardo Devesa
Congress Director

11:00 am – 12:00 pm
Climate Change

Talk given by an expert on climate change and global warming, their consequences and potential solutions, by Emilio Santiago Muñío.

Emilio Santiago
Anthropologist – Technical Director of Environment – Móstoles – Spain

Climate Change
12:00 pm – 1:00 pm
Form - Matter - Energy

The guests presented their experiences and points of view on the relationships between spatial form, its materiality and energy consumption/savings.

Roger Tudó
Harquitectes – Architect – Sabadell – Spain

Javier García-Germán
TAAs Totem Arquitectos Asociados – Architect and Director – Madrid – Spain

Sandra Bestraten
Bestraten Hormias – Architect and founder – Barcelona – Spain

Climate Change
3:00 pm – 4:00 pm
Responsibility - Standards - Bio-construction

A panel discussion on civil, social and ecological responsibility. The discussion will also deal with how to regulate standards that are adapted to comfort and energy-saving requirements and low CO2 emissions. In addition, the debate will cover materials with low environmental and ecological impacts, those that are recycled, of plant origin and bio-compatible and those that don't entail any toxicity for people and the environment.

Sonia Hernández Montaña
Arquitectura Sana – Architect – Barcelona – Spain

Bruno Sauer
Green Building Spain – Architect – Valencia – Spain

Bruno Cuevas
PassivHaus Spain

Humanities
4:00 pm – 5:00 pm
Special session: Sagrada Familia

Fernando Villa
Sagrada Familia – Building and Technology Director – Barcelona – Spain

Climate Change
5:00 pm – 5:30 pm
Conclusions Day 1

Presentations of the most significant conclusions and reflections on the seminar by an editor.

Núria Moliner
Escala Humana TVE / UIC – Architect – Barcelona – Spain

15.05.2019

Technology
10:00 am – 11:00 am
Technological disruptions

Talk presented by Neil Leach, an expert on technological changes and innovations and their future challenges and implications in areas such as work and design.

Mario Carpo
The Bartlett, UCL – Academic – London

Technology
11:00 am – 12:00 pm
Dismantlings - Supraterritories-Connectivities

A building's use throughout its lifespan can now be monitored, and therefore optimised, in order to adapt it on an ongoing basis. The same applies to urban environments, infrastructures and public facilities. Similarly, we need to develop new programmes for uses that are as yet in their infancy. Moreover, expanded architecture is designed not only for humans but also for other living beings, offering itself as an agent that operates within an integral ecosystem.

Lluís Ortega
JL–Office – Architect – Chicago

Alejandro Haiek
Lab-Pro-Fab – Director – Umeå – Sweden

Aixa Del Rey
Flexo Arquitectura – Founding Partner – Barcelona – Spain

Technology
12:00 pm – 1:00 pm
Ephemeral uses - Combinations - Reuses

A panel discussion on spatial logics based on temporary occupancy, the hybridisation of programmes and the reuse of disused buildings.

Roger Páez
AiB architects – Dr of Architecture / Director at MEATS – Barcelona – Spain

Eva Gil
elli [oficina de arquitectura] – Architect – Madrid – Spain

Miquel Lacasta
Archikubik – Dr of Architecture – Barcelona – Spain

Tomas Diez
Fab City & IAAC – Director – Barcelona – Spain

Fernando Villa
Sagrada Familia – Director of Building and Technology – Barcelona – Spain

Technology
1:00 pm – 1:15 pm
Conclusions Day 2

Presentations of the most significant conclusions and reflections on the seminar by an editor.

David Basulto
ArchDaily, Plataforma Arquitectura – Editor – Santiago de Chile – Chile

Digitalization
3:00 pm – 4:00 pm
Digital revolution

Talk given by an expert on how to adapt and prosper in the third digital revolution.

Desmond Leach
Tongji/EGS/FIU – Architect – Venice – United States of America

Digitalization
4:00 pm – 5:00 pm
Doers - Explorers - Forensic Experts

The guest speakers provided examples of how architecture is expanding as a result of new technologies and digital capabilities and offering diverse and specialized services such as material and formal experimentation, prototype manufacture, geo-located data display and the conducting of forensic analyses on buildings, areas and human groups that have been subject to violent actions.

Areti Markopoulou
IAAC – Architect – Barcelona – Spain

Mar Santamaria
300.000Km/s – Urbanist Architect – Barcelona – Spain

Ana Cocho
UIC Barcelona School of Architecture – Head Culture / Professor and researcher – Barcelona – Spain

Digitalization
5:00 pm – 6:00 pm
Activate - Manufacture - Hybridise

This panel discussion debated how the digitalisation of architecture has made it possible to plan and construct increasingly complex and interactive design processes. It also looked at how robotics is increasing the number of options with regard to the automation of construction processes and their monitoring, geared towards collaboration between machines and humans by applying artificial intelligence. The above is expanding construction processes by means of digital manufacturing, which allows anything to be designed and built anywhere.

Tomas Diez
Fab City & IAAC – Director – Barcelona – Spain

Fernando Villa
Sagrada Familia – Director of Building and Technology – Barcelona – Spain

Digitalization
6:00 pm – 6:15 pm
Conclusions Day 3

Presentations of the most significant conclusions and reflections on the seminar by an editor.

Álexandre Dubor
IAAC – Architect and professor – Barcelona – Spain

16.05.2019

Humanities
10:00 am – 11:00 am
Migrations and inequalities

Talk given by an expert on the social changes caused by migrations and inequalities, as well as their consequences for the city and, in particular, architecture.

Karo Moret
ANU/UPF – Lecture–Historia – Canberra – Cuba

Humanities
11:00 am – 12:00 pm
Trust - Empowerment- Cooperation

The speakers at this session demonstrated how the disciplines of design are becoming more involved in the governance of the city so as to meet the needs and address the shortcomings of basic social services for everyone, such as the right to public space and housing, based on strategies that activate trust and involvement in collaborative design, cooperation and, as a result, the ultimate empowerment of citizens.

Gilles Delalex
Studio Muoto – Architect – Paris – France

Kathrin Golda-Pongratz
Universitat Internacional de Catalunya – Architect – Barcelona – Spain

Fabienne Hoelzel
Fabulous Urban – Urban Designer – Zürich – Switzerland

Humanities
12:00 pm – 1:00 pm
Self-construction - Reintegration- Touristification

Panel discussion on the need to promote social housing and alternatives such as self-building to meet the demand for first homes among young people and accommodation for an ageing population. Examples of how to reactivate informal occupancy on the ground will also be provided. It also looked at how the tourism industry is affecting the existing social fabric.

Magdalena Plocikiewicz
Acieroid – Director of Marketing and Communication – L'Hospitalet de Llobregat – Spain

Ibai Rigby
Ibai Rigby – Editor – Barcelona – Spain

Marina Romero
Marina Romero – Director – Gran Canaria – Spain

Humanities
1:00 pm – 1:15 pm
Conclusions Day 4

Presentations of the most significant conclusions and reflections on the seminar by an editor.

Quique Melús
HIC Arquitectura – Editor – Barcelona – Spain

Humanities
3:00 pm – 5:00 pm
Women Can Build: Towards an equal construction industry

Welcome and presentation of the event:

Ana Vallés
President of BBConstrumat

Project presentation "Women Can Build":

Beatriz Oliete
Manager of the "Women Can Build" Project of the *Fundación Laboral de la Construcción* (Construction Employment Foundation)

Round table:

Beatriz Oliete
Manager of the "Women Can Build" Project of the *Fundación Laboral de la Construcción* (Construction Employment Foundation)

Aurora Huerga
General Secretary of the Construction and Services of Catalonia Trade Union Commission

Juani Arenas
Secretary of the Construction Industry and Related Sectors of the UGT FICA Trade Union in Catalonia

Eulàlia Tort
General Secretary of the Association of Developers and Building Constructors in Catalonia (APCE in its Catalan initials) and Manager at the Tort Group

17.05.2019

Humanities
10:00 am – 11:00 am
World views and alternative narratives

Talk conducted by Ingrid Guardiola on the need to create other narratives in view of the ecological, technological and social changes we are undergoing.

Ingrid Guardiola
University of Girona – Associate Professor – Girona – Spain

Humanities
11:00 am – 12:00 pm
Alterity - Experimentation - Controversy

Narratives tend to be imposed by the prosperous, advanced and powerful classes. However, other discourses are being developed by disadvantaged groups with no resources to make themselves heard. Some voices countering the hegemonic architectural culture are constructing these expanded narratives, with implications for new teaching plans and methodologies. These narratives develop alternative contents in terms of their basis and form and distribute them via diverse channels and in different ways.

Lola Sheppard
Lateral Office / Brackett – Professor and Architect – Toronto – Canadá

Felipe De Ferrari
Plan Común / OnArchitecture – Architect – Paris – France

Victor Navarro
Langarita-Navarro – Architect – Madrid – Spain

Humanities
12:00 pm – 1:00 pm
Criticism - Culture - Networks

Panel discussion on how expanded architecture reinforces the humanistic value of the discipline, applying this vision to design and to the creation of knowledge and its dissemination, beyond an instrumentalised application of the knowledge.

Enric Llorach
CEA Globalcampus – Adjunct Faculty – Barcelona – Spain

Gianpiero Venturini
Itinerant Office – Founder – Madrid – Spain

Fredy Massad
ABC cultural – Architect and critic – Vilafranca del Penedès – Spain

Humanities
1:00 pm – 1:15 pm
Conclusions Day 5

Presentations of the most significant conclusions and reflections on the seminar by an editor.

Marta Bugés
UrbanNext – Editor and Content Curator – Barcelona – Spain



"Interiors Lovers has served to give visibility to a part of the sector, to generate a meeting point for top-level professionals and to assert the quality of interior design."

Carlota Casanova
LoCa studio & Wefindyourplace CEO

Meetings Arena

Interiors Lovers
Your Retail, Office, Hotel and Housing Forum
The relationship between interior architecture and construction under discussion.

The first event, attended by 300 people and featuring a panel of domestic and international contract, living space and office sector experts and professionals, to promote debate and multi-disciplinary dialogue with professionals from the interior design sector within the construction environment.

Curator:
Miguel Angel Aguiló
Architect, Communication Consultant
for Architecture and Design
Companies

Carlota Casanova Calvo
LoCa studio & Wefindyourplace CEO

Teresa Casas Cornellà
President of the General Council of
Interior Designers
Dean of the Col·legi de Dissenyadors
d'Interiors de Catalunya (Association
of Interior Designers of Catalonia)

Organised by:
**Col·legi de Dissenyadors
d'Interiors i Decoradors de
Catalunya (Association of Interior
Decorators and Designers of
Catalonia) and General Council of
Official Associations of Decorators
and Interior Designers**





"Interiors Lovers stands out from and differs from other forums because of the participation of both national and international speakers. Speakers from other cultures who bring new ways of working, new problems and innovative solutions."

Teresa Casas Cornellà
 President of the General Council of Interior Designers
 Dean of the Col·legi de Dissenyadors d'Interiors de Catalunya
 (Association of Interior Designers of Catalonia)



Interiors Lovers Programme

14.05.2019

Ways of Seeing & Ways of Doing:
Retail, Office, Hotel & Housing

11:00 am - 11:15 am
Opening and presentation

Conducted by:
Teresa Casas
Interiors Lovers

11:15 am - 12:00 pm
Jeanine Lima
INTERCON - Project Manager - Barcelona
- Spain

12:00 pm - 1:00 pm
Javier Jiménez Iniesta
Studio Animal - Director - Madrid - Spain

3:00 pm - 3:45 pm
Presentation of the portfolio of
opportunities and exportable
products of the construction
materials industry in Cuba

Cesar A. Revuelta Mallolina
Vice-Chairman Business Group - Materials
Industry Business Group

Alberto Olivera Fis
Business Manager - Construction and
Assembly Business Group

3:45 pm - 4:00 pm
Presentation of services provided
by the Construction Design and
Engineering Business Group

Angel M. Alvarez Pino
Vice-Chairman Design and Engineering
Business Group - Design and
Engineering Business Group

15.05.2019

Ways of Seeing & Ways of Doing:
Retail, Office, Hotel & Housing (Part 1)

10:00 am - 10:15 am
Opening and presentation

Conducted by:
Marcel Benedito
Office District - Editorial Manager - Sant
Cugat - Spain

10:15 am - 11:00 am
Office

Juan Carlos Baumgartner
Space Arquitectura - CEO - Mexico City -
Mexico

11:15 am - 12:00 pm
Hotel

Jordi Cuenca
Verum Hotel Development S.L. - Architecture
Area - Management - Barcelona - Spain

12:00 pm - 12:15 pm
Coffee
Sponsored by GIRA Ibérica SL

12:15 pm - 1:00 pm
Housing

Maria Gabriela Mendoza
MG Interior Design - CEO - Santo Domingo -
Dominican Republic

1:00 pm - 1:45 pm
Retail / Gastronomy

Carmen Baselga
Carmen Baselga_Project Workshop / Baselga
& Partners - Creative Director / Manager -
Valencia - Spain

1:45 pm - 3:00 pm
Panel discussion with the speakers
of the day

Chair / Presenter:
Marcel Benedito
Office District - Editorial Manager - Sant
Cugat - Spain

Ways of Seeing & Ways of Doing: Retail,
Office, Hotel & Housing (Part 2)

4:00 pm - 6:00 pm
Workshop #1: Materiality.
Material boards that Matter

Conducted by:
Natalia Ojeda
Matter Barcelona - Architect -
Communication - Barcelona - Spain

16.05.2019

Ways of Seeing & Ways of Doing: Retail,
Office, Hotel & Housing (Part 1)

10:00 am - 10:15 am
Opening and presentation

Conducted by:
Pilar Marcos
Interior Design Magazine - Director and Editor
- Majadahonda - Spain

10:15 am - 11:00 am
Office

Eva Prego
Stone Designs - Founder/Interior and
Industrial Designer - Madrid - Spain

11:15 am - 12:00 pm
Retail

Olga Hanono
OH STUDIO - Founder of the architecture and
interior design firm - Mexico City - Mexico

12:00 pm - 12:15 pm
Coffee
Sponsored by GIRA Ibérica SL

12:15 pm - 1:00 pm
Hotel

Victor Legorreta
LEGORRETA - General and Design Manager
at LEGORRETA - Mexico City - Mexico

1:00 pm - 1:45 pm
Housing

Isabel López Vilalta
Isabel Lopez Vilalta - Creative Director &
Founder - Barcelona - Spain

1:45 pm - 3:00 pm
Panel discussion with the speakers
of the day

Chaired by:
Pilar Marcos
Interior Design Magazine - Director and Editor
- Majadahonda - Spain

Ways of Seeing & Ways of Doing: Retail,
Office, Hotel & Housing (Part 2)

4:00 pm - 6:00 pm
Workshop #2: BCD Communication
with Clase - Building Stories.
A storytelling workshop by Clase

Conducted by:
Anna Anchon
Barcelona Centre of Design - Barcelona

17.05.2019

11:00 am - 12:00 pm
Projecting Light. Architectural
Reflections

Octavi Mestre
Architect - OMA

Aryanour Djalali
Architect - DNA Barcelona

Mariel Fuentes
Light Designer - LDLuz

Pia Capdevila
Interior Designer Pia Capdevila Interior
Design

Mar Gausachs
Art Director and Interior Stylist

Marcela Grassi
Photographer - Marcela Grassi Photography

Chaired by:
Manel Escacena-Chica
Founder of M Storydesigners PR Agency -
Partner of Cuca Guixeras Communication

Media & Communication & Press

12:00 pm - 1:00 pm
Do you want to build your digital
brand but you don't know how?
Or have you been present on the
Internet and you want to know if your
strategy is the right one?



Interview with Commercial Agents

Meetings between companies and Commercial Agents of the sector

BBConstrumat gave free scheduled interviews between companies and commercial agents of the construction sector. The activity was aimed to the exhibitors who were looking to boost their business sales in Spain.

Organized by:



Advice on internationalisation

ACCIÓ, the company competitiveness agency, created a consultancy service for Catalan companies undergoing internationalisation and innovation processes. Support for foreign companies seeking to develop their business in Catalonia.

Advice:



Press Corner

Digital journals, press and media specialising in construction, architecture and engineering

Barcelona Building Construmat 2019 offered all visiting professionals the Press Corner, a space where they could learn about, consult and obtain copies of the leading national and international specialised publications in the fields of construction and architecture.

Official media partners:



Supporting media partners:

- | | |
|--------------------------|--------------------------------------|
| AFL | Industria de la madera |
| ANERR News | Infoconstrucción |
| ARQCO | Interempresas |
| El Periódico del Azulejo | Job Wear |
| Alimarket | Madera Sostenible |
| The BIM | Manutención & Almacenaje / Logística |
| BIM Community | Integrada |
| Calor y Frio | Nuevo Azulejo |
| Candela | NaN Arquitectura y Construcción |
| Cemento y Hormigón | Novoperfil |
| CIC | Ovacen |
| Conarquitectura | Pavimentos y Revestimientos |
| Construmática | Pro Instalaciones |
| Diseño Interior | Promateriales |
| Dobooku | Protección Laboral |
| DPA Arquitectura | Protección Solar |
| El Instalador | Rehabitec News |
| Eco Construcción | Sala Baño |
| Energía de hoy | Smart Building |
| Entre rayas | TuReforma |
| Experimenta | Urban Next |
| Futur Energy | Ventanas, Puertas, Cerramientos, |
| Grupo Via | Acrystalados |
| Hostelería | y Protección Solar |
| Hostelpro | Vidrio |
| Hueco Arquitectura | Vidrio Perfil Vitrea |
| iKonstrucción | World Construction Today |
| Inarquía | |



"BBConstrumat is expanding in keeping with a booming sector."

El País

"The number of visitors to our stand has been very high and of a very high quality. Highly knowledgeable professionals who are very clear idea about the concepts of the future."

Eloi Tarrés
Evowall

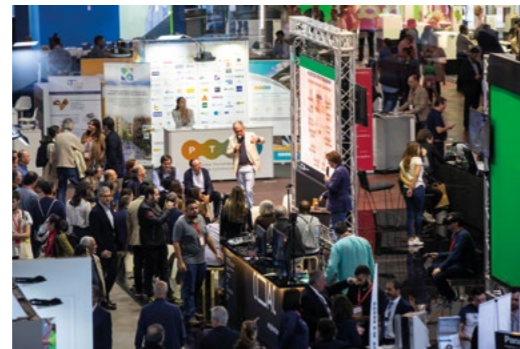
Industry Arena

The great 2019 exhibition

The large exhibition area included representation of the sector's entire value chain, with 34% more exhibiting companies than in 2017 and 422 exhibitors and 1,000 brands represented.

We should highlight the following companies:

Aislux	Knauf
Allplan Systems	Krypton Chemical
Alsina	Kömmerling
BASF	Layher
Baupanel Systems	Marcegaglia
Blastrac	Mecanoviga
Blindbox	Pladur
Ciments Molins	Plataforma Passivhaus
Cortisa	PTEC
Cosentino	Roca
Durmi	Sika
Federation	Simon
of Construction Guilds	Sorigué
Germans Homs	Strugal
Hager	Tecnalia
Ibermática	Tolsa
Jung	Zehnder



The great 2019 exhibition

We represented the entire construction chain, organising the area in accordance with the nature of each company throughout the construction process.

Outdoor space

- Tools and Machinery
- Construction site safety equipment
- Construction measuring tools and surveying equipment
- Lifting and transport
- Public space and urban planning
- Prefab construction, modular building and precast
- Building structures
- Insulation, waterproofing, adhesives and sealants
- Nzeb, Energy efficiency and renewables
- Sun control and shading devices
- External cladding, façade systems and roofing materials
- Doors and windows
- Locks and metal components
- Green building

Innovation

- BIM
- Digital construction technologies

Services

- Professional services
- Industry associations, government and local authorities
- Construction companies

Inside space

- Flooring
- Interior wall and ceiling cladding
- Paints and coatings
- Timber construction
- Kitchens
- Bathroom, sanitaryware, fixtures and fittings
- Lifts and escalators
- Lighting and electrical
- Heating, Ventilating and Air Conditioning
- Building installations

“Fira de Barcelona’s Construmat is well-established and growing.”

La Razón

Exhibitors

BBConstumat 2019

#
2PE FONAMENTS ESPECIALS EN PETITS ESPAIS
3 MOTION VIRTUAL GMBH
3 S' TECH

A
ACCA SOFTWARE
ACE - ASSOCIACIÓ CONSULTORS D'ESTRUCTURES
ACMI
ACTIS, S.A
ADVANCED FIBER OPTICS, S.L
ADVANTAGE AUSTRIA
AERIAL INSIGHTS
AEROGEL SOLUCIONES
AGOSTINI GROUP, S.R.L
AISLUX, S.A
ALLPLAN
AL-TOP TOPOGRAFIA, S.A
AMC MECANOCAUCHO
AMORIM
ANFIT - ASS. NAZIONALE TUTELA FINESTRA
ANZEVE
APLICACIONS AUDIOVISUALS, S.L
APLITOP
AQUATEC PROYECTOS PARA EL SECTOR DEL AGUA, S.A.U
AQUÍ TU REFORMA
ARCBN ENGINEERS
ARCHICAD ESPAÑA (GRAPHISOFT)
ARCO INDUSTRIE, S.R.L
ARD RACCANELLO
ARGEX - ARGILA EXPANDIDA, S.A
ARMO, S.P.A
ARNABAT, S.A
ARQTERIA
ARQUETICA - ARQUITECTURA Y ACCESIBILIDAD
ARQUIMA
ARQUIP K.M.O, S.L.P
ASCEM
ASCENSORES DE VACIO PVE GROUP ELEVACIO
ASEFAVE
ASSITES - ASSOCIAZIONE ITALIANA TENDE

B
BALLAN SPA
BALTIC WOOD SPAIN
BARCITRONIC
BASF CONSTRUCTION CHEMICALS ESPAÑA, S.L
BATEIG PIEDRA NATURAL, S.A
BAUPANEL SYSTEM, S.L
BDECORA
BEA HISPANIA, S.A
BEAL INTERNATIONAL, S.A
BENITO URBAN, S.L.U
BIM COMMUNITY
BIM&D CONSULTING & PERFORMANCE
BINDERHOLZ GMBH
BLASTRAC BV IBERIA SUCURSAL EN ESPAÑA
BLINDBOX
BLUEBEAM (SIMBIM AUTHORIZED PARTNER)
BTV
BUYLED

C
CAFARNAUM
CAI LA RADES, S.L
CAJASLANT - BECK & HEUN IBERICA
CALCHER GROUP
CALMESA SILOS Y ESTRUCTURAS METÁLICAS, S.L
CAMPANILE
CANAMOULD EXTRUSIONS
CAO COUNTY HENGDA WOOD PRODUCTS CO., L.T.D
CASALI
CASAS INHAUS
CASEITALY, S.R.L
CEMENTO NATURAL TIGRE
CEMENTOS MOLINS INDUSTRIAL, S.A
CENTRO TECNOLÓGICO REGIÓN DE MURCIA
CERAMICA BELIANES, S.L
CERAMICA FUSTE, S.A
CERAMICA LA COMA, S.A
CERAMICA SAMPEDRO, S.A
CERANOR, S.A
CERRATO CHIUSURE METALLICHE, S.P.A
CESCE
CHATRON, L.D.A
CIC
CISA CERRADURAS
CIVIGNER, S.L
COL-LEGI D'APARELLADORS, ARQUITECTES
TÉCNICS I ENGINYERS D'EDIFICACIÓ DE BARCELONA
COL-LEGI D'ARQUITECTES DE CATALUNYA
COL-LEGI DISSENYADORS INTERIORS CAT
COMERCIAL ESTELLER, S.L
CONCORAL, S.A
CONSORCIO PASSIVHAUS
EDIFICIOS CONSUMO
CONSTÁLICA
CONSTRUCCIONES METALICAS AGOR, S.L
CONSTRUSOFT
CONTROLPACK SYSTEMS, S.L
CONVERGENT GROUP
COOPERATIVA SERRAMENTI COSERPLAST
CORETEC
CORRETJA, S.L
CORTISA, S.L
COSENTINO, S.A
CPI INTEGRATED
CREDITO Y CAUCIÓN
CRICURSA
CS ESTRUCTURAS METALICAS
CYPE SOFTWARE

D
DANOSA
DEEP SOLUTIONS
DEIN INTERDECOR, S.A / L&D LIGHTS
DEVAIM CONSULTORES
DIGITAL LUXE, S.L
DIVERS ARQUITECTURA
DURMI

E
E. PLANTALECH, S.L
E.S.PO. ENTE SVILUPPO PORFIDO
ECOCERO
EDILCASS, S.R.L
EDISA
EFAPEL, S.A
EGOIN, S.A
ELASTOTET, S.A
ELEMENTOS DE METAL
ELEMENTS, S.R.L
ELIA
ÉLITE DISEÑOS
EMAC®
EMCO SPAIN
ENCOFRADOS ALSINA
ENERGIAO
ENERGIEHAUS ARQ-DISEÑO Y FORM EDIF, S.L.
ENGINY, S.L
EPSON IBERICA
EPW, L.D.A
ESCO SUELOS DE MADERA, S.L
ESPERFIL PERFILES Y ACCESORIOS MET., S.L
ESTRUCTURANDO
ESTRUCTURAS ARQUE, S.L
EURO ROCA
EUROTEC GMBH
EVOWALL TECHNOLOGY

F
FAKRO SPAIN, S.L
FARO SPAIN, S.L.U
FB GRUP
FCV AISLAMIENTOS ENVOLVENTES, S.L
FELDER GROUP IBERICA, S.L
FELIU N&I, S.L
FEMOX DEUTSCHLAND GMBH
FERRARO GROUP, S.R.L
FERROS LA POBLA, S.A
FIBRE TECHNOLOGIES INTERNATIONAL
FICEP IBERICA, S.A
FINCO - FEDERAZIONE INDUSTRIE PRODOTTI
FINSA
FINSTRAL, S.A
FIVICOR
FLEX&LUX BY SERVICANTO
FLEXICEL INDUSTRIAL, S.L
FLORIDA, S.R.L
FOSHAN SANSHUI FENGLU
ALUMINIUM CO., L.T.D
FRIGERIO LIVING, S.R.L
FUNDACIÓN LABORAL DE LA CONSTRUCCIÓN
FUSTES SEBASTIA, S.L

G
GAMA SPRAY EQUIPMENT - M.V.P. ESPAÑA
GASPER PAVIMENTOS, S.L
GENERALITAT DE CATALUNYA DEPARTAMENT DE TERRITORI I SOSTENIBILITAT
GEO NOWATEK, S.L
GERMANS HOMS DES DE 1852
GESTIÓN Y SERVICIOS FOTOGRAMÉTRICOS, S.L
GIRA IBERICA, S.L
GLOBAL VENTA PLUS
GOCCIA, S.P.A
GRACIOUSCIRCLE # ENERGY, L.D.A
GRAPHISOFT (SIMBIM / DISTRIBUIDOR EN ESPAÑA Y ANDORRA)
GREENMEDIA
GREMIOS
GRIESSER PERSIANAS Y ESTORES, S.L
GRIFO FLEX, S.P.A
GRUPAGUA - POLLET WATER GROUP
GRUPIDEA
GRUPO NEBRALEJO - TENSAR
GRUPPO NORTON
GUIL
GYPTEC IBERICA - GESSOS TECNICOS, S.A

H
HAGER SISTEMAS, S.A.U
HEABOO, L.D.A
HECO SCHRAUBEN IBERICA, S.L (HSI)
HENIC INNOVATION, L.D.A
HERCAL DIGGERS, S.L
HERMS, S.A
HIDROTEC
HISPALYT
HOMEFIBRE DIGITAL NETWORK GMBH
HONEXT
HOUZUK UK, L.T.D
HUMICONTROL, S.L
HUMITAT-STOP, S.L

I
IBERMATICA
IBERTRAC, EL CONTROL DE PLAGUES
IBSTT ASO. EMPRESAS DE TECNOLOGÍA SIN ZANJA
ICE - AGENCIA ITALIANA COMERCIO EXTERIOR
ICONSA
IDVIA 2020 HORIZONTE 2020, S.L
IKO INSULATIONS
INASOL
INDOIN
INDUS INGENIERIA Y ARQUITECTURA, S.A
INELT MULTITECHNICAL SERVICES - CIVITY GROUP
INFOEDITA COMUNICACIÓN
INGENNUS URBAN CONSULTING, S.L.P
INMETALS
INSTITUT CATALÀ DEL SÒL
INSTITUT MUNICIPAL DE L'HABITATGE I REHABILITACIÓ DE BARCELONA
INSTOP
INTEREMPRESAS - ARQCO
IS INGENIERIA SEARE
ISOLCASA, S.R.L
ITAINNOVA
ITEC INSTITUT TECNOLOGIA
CONSTRUCCIÓ DE CATALUNYA
ITW DUO-FAST DE ESPAÑA SAU

J
JAMYS
JESFER DECORACIONES, S.L
JOSEP MUNTAL, S.L
JUNG

K
KAYATI, S.L
KESSEL AG
KINGSPAN INSULATION, S.A
K-LINE LA VENTANA LUMINOSA
KM IMPIANTI, S.R.L
KNAUF GMBH
KÖMMERLING
KOMPOZITOR PLASTICS DEVELOPMENT, L.T.D
KRYPTON CHEMICAL, S.L
KRYSTALINE TECHNOLOGY
KSA MODULAR
KYOCERA UNIMERCO FASTENING A/S

L
LA CAPELL
LAVOLA
LAYHER, S.A
LED 5V, S.L
LEDSFACTORY
LEICA GEOSYSTEMS, S.L
LEOLAMP
LISANT LIMPIEZA INDUSTRIAL Y SANEAMIENTO
LLC TEGRUSS
LM GRANITOS - EXTRAÇÃO TRANSFORMAÇÃO
LUCIA OLANO ARQUITECTURA-PROGETIC
INGENIERÍA PASSIVHAUS
LUMION
LUOYANG MEIDIYA CERAMICS CO., L.T.D
LUPAK METAL, S.R.L
LUQUIN ARQUITECTOS
LUV ARCHITECTURE & DESIGN, S.L
LUZ NEGRA, S.L

M
MAINPOL GALICIA, S.L
MALLEXPAN
MAPEI
MARCEGAGLIA BUILDTECH
MASA GMBH
MASTERTENT
MATHIOS REFRACTORIES, S.A
MATTER ATELIER, S.L
GROUP
MECANOVIGA, S.L
MEMYOC, S.L
MILWAUKEE
MINISTERIO DE LA CONSTRUCCION
MIXER TECHNOLOGY
MODELICAL
MONNET-SEVE
MONVAGA
MOREDA RIVIERE TREFILERÍAS
MULTIPANEL
MURPROTEC, S.L.U

N
NEURTEK INSTRUMENTS
NIBE
NINGBO KEXING PIPE INDUSTRIAL CO., L.T.D
NINGBO NOEKIN MECHANIC & ELECTRONIC TECHNOLOGY CO., L.T.D
NORAY CONTAINERS LOGISTICS, S.L
NOVALTRA
NOXIFER, S.L
NUMA INDUSTRIAL

O
OGUN CONSTRUCTION TECHNOLOGIES, S.L
OHRA
ON DISEÑO
ONDULIT ITALIANA, S.P.A
ONHAUS
OTP GLOBAL ENGINEERING

P
P.M.T., S.R.L
PAEE CONSTR. PASSIVHAUSS - ECCN
PANASONIC ESPAÑA-SUC.
PANASONIC MARKETING
PEFC
PERSYCOM MADRID, S.L
PFEIFER TIMBER GMBH
PHIN CONCEPTION
PILE - PRODUTTORI INSTAL. LATTONERIA EDIL
PL28 INGENIERIA
PLADUR
PLATAFORMA EDIFICACION PASSIVHAUS
PLATAFORMA TECNOLÓGICA
ESPAÑOLA CONSTRUCCIÓN
PLATIO
PRECON
PREFABRICADOS VILLALONGA, S.A
PREIS & CO GES.M.B.H.
PRENSOLAND, S.A
PRIHODA SPAIN, S.L.U
PROJECTS WORLDWIDE SB4, S.L
PROMSA
PROPAMSA, S.A.U
PROSKENE
PRUSSIANI ENGINEERING, S.P.A

R
RC CONSTRUCTION
RD LUNA MAQUINARIA, S.L
REEV ARQUITECTURA
REHATEC
RENSON
REPLUS
RESSTENDE, S.R.L
RIB SPAIN, S.A
RIMSA
RISPOSTA SERRAMENTI, S.R.L
RIWEGA, S.R.L
ROCA
ROI
ROOFECO SYSTEM, S.L
ROTHO BLAAS IBERICA, S.L
ROTULOS MACE, S.A

S
S&P REINFORCEMENT
S.P.I., S.P.A
SAAIG GEOMECHANICS
SABLONO GMBH
SAFINA-SOCIEDADE INDUSTRIAL DE ALCATIFAS, L.D.A
SALOLA
SANO TRANSPORTGERAEETE GMBH
SCAGLIONI, S.R.L
SCHLÜTER SYSTEMS, S.L
SCHUTT GRANDE FORGE SAS
SENETON, S.A / EXTEND SYSTEM
SERAPLASTIC, S.R.L
SERRANDE FILIPPI, S.R.L
SEYS
SGS, S.R.L
SIBER ZONE, S.L
SICC, S.R.L
SICURPAL, S.R.L
SIKA
SILKWALL TOOLS / KALETA / OLEJNIK
SILVELOX EUROPE, S.P.A
SIMBIOTIA
SIMON, S.A
SIMPSON STRONG-TIE
SINTALA DESIGN - ANB
SISTEMES D'ORGANITZACIO, S.A
SLATE-LITE
SMALL-LIFT, S.L
SMART ENGINEERING, S.L
SOFKIA CONSULTORIA Y DESARROLLO, S.L.U
SOLARCHECK - COVERGLASS (GRUPO DTI)
SOLARFOCUS GMBH
SOLIBRI
SOLITO, S.R.L
SOPREMA
SORIGUÉ
SOTHIS
SOU DAL QUIMICA
STABILIT EUROPA, S.L.U
STANDARTPARK, S.L
STARMODUL.COM
STEICO FRANCE, S.A.S
STEINN KAPITAL
STERN
STO IBERICA
STRUGAL
STUPENDASTIC
SYNTHESIA TECHNOLOGY EUROPE

T
TAK N' TAP
TARABORRELLI V&T SNC
TEAMSYSYSTEM CONSTRUCTION
TECNALIA CORPORACION TECNOLOGICA
TECNIFUSTA
TECNO EDIL SISTEM, S.P.A
TECTÓNICA
TEJAS BORJA
THERMOCHIP
TIGER COATINGS SPAIN
TILO GMBH
TOLSA, S.A
TOOLS IBERICA
TORNILLERIA INDUSTRIAL, S.A
TORRES SERVICIOS TECNICOS
TRANSMETAL - TRANSFORMADOS
METALICOS, S.A
TRENCADIS DE SEMPRE, S.L
TUBOZETA, S.R.L

U
UNIMETAL, S.P.A
UNISECULO IMP. EXP., L.D.A
URETEK SOLUCIONES INNOVADORAS, S.L.U

V
VALLS FUSTA
VARO IBERICA BRICOLAGE, S.L
VERUM HOTEL AREA ARQUITECTURA
VICENTE GALVE STUDIO
VIMAPLAS
VIVRE EN BOIS
VOLCALIS - ISOLAMENTOS MINERAIS, S.A

W
WERU GMBH
WIND BUSH BY NEW WORLD WIND
WORLD ARCHITECTS
PRESS CORNER
WORLDSENSING

X
XECUR
XIAMEN INTOP EXHIBITION CO., L.T.D
X-LAM DOLOMITI
XUZHOU WOODHI TRADING CO., L.T.D

Y
YTONG / XELLA

Z
ZEB ARQUITECTURA
ZEHNDER
ZERO 5, S.R.L
ZEST ARCHITECTURE
ZHEJIANG TIME NEW MATERIAL CO., L.T.D
ZWSPAIN

The Professional Spot

We connect know-how with products and materials to increase opportunities for cooperation and business.

The trade show had a professional services area, a pioneering initiative at construction events where architecture, engineering and interior design companies offered their services and showcased their projects to professionals from the sector.

Participating companies:

- ARCbn Enginyers
- Arqteria
- Arquetica
- Arquip Km.0, SLP
- BIM6D Consulting & Performance
- Cafarnaüm
- Casas inHAUS
- Divers Arquitectura
- Energia0
- Grup Idea
- Iconsa
- Indus Ingeniería y Arquitectura S.A
- Inelt Multitechnical Services
- IS Ingeniería SEARE
- Lucia Olano Arquitecta_projectic Ingeniería
- Luquín Arquitectos
- Luv Architecture & Design
- OTP Serveis d'Enginyeria, S.L.
- PL28 Ingeniería
- Proskene Conservation
- PWsb4
- REEV Arquitectura
- Simbiotia
- Smart Engineering
- Verum Hotel_Area Arquitectura
- ZEB Arquitectura
- ZEST Architecture

With the collaboration of:



“TPS is a very interesting initiative because it gives visibility to other areas, not only building materials, but also the integration between those who recommend these materials and the materials themselves. It’s a win-win situation for both the exhibitors and ourselves.”

Luv Architecture & Design - The Professional Spot



Sustainable Solutions

By Evowall & Arquima

Sustainable Solutions was an initiative of Evowall and Arquima, with the support of BBConstrumat. Both offer sustainable and industrialized building construction, achieving the standards of the Passivhaus certificate.

With a total exhibition space of 475m², Arquima and Evowall built 2 residential buildings of 70m² and 90m². Both houses were real projects that were exhibited temporarily in this area. At the end of the fair they were relocated to their final spaces and were certified by the Passivhaus Institute.

In the houses it was possible to observe the different phases and constructive layers from the structure to the finished house.

“Sustainable Solutions has exceeded our expectations. We’ve sensed a great interest in sustainability issues”.

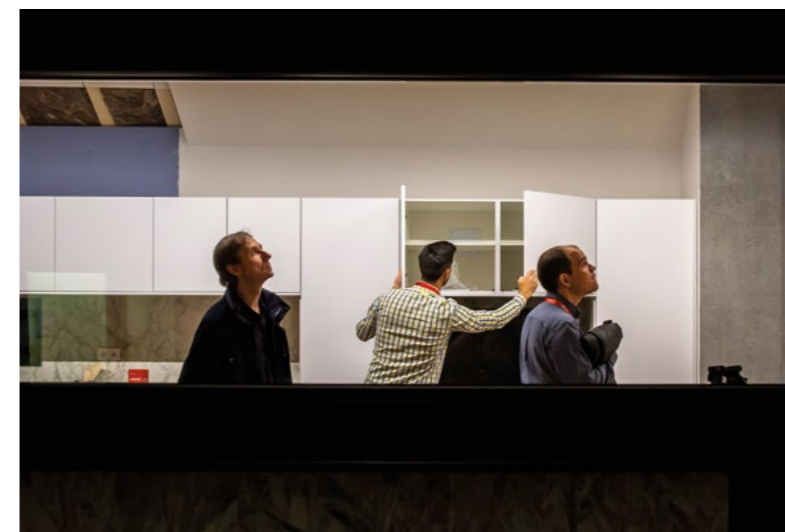
Evowall & Arquima



Organizing companies:



With the collaboration of:



The BIM Spot

A meeting point for knowledge, displaying and networking. A specific and exclusive area to publicise the new work management models that have emerged within the construction sector, including BIM technology, the LEAN philosophy and IPD collaborative contracts based on new technologies and increased cooperation.

The space included a schedule of talks and debates as an introduction to this methodology and to address the impact of its application, as well as those of other systems such as LEAN and Integrated Project Delivery.

The BIM Spot also contained an exhibition area with a wide array of BIM product and service companies, software and application developers and training centres, a networking area to promote business meetings and contacts between companies and professionals and a commercial presentation area to make known the latest innovations.

With the collaboration of:



Programme

14.05.2019

10:00 am - 10:45 am
BIM in small-scale architectural projects
David Delgado (DDV Arquitectura)

11:00 am - 11:45 am
BIM in Civil Engineering. INECO case study
Alicia Torija (Allplan)
Jorge Torrico (Ineco)
Raquel Veneros (Ineco)
Jorge Noel (Ineco)

12:00 pm - 12:45 pm
Standardisation of information in BIM objects and models
Ferran Bermejo (ITeC)
Elena Pla (ITeC)

1:00 pm - 1:45 pm
Digital projects with the eCOB standard
Cristobal Bernal (Paraproy)

4:00 pm - 6:00 pm
The keys to the transformation of the sector: BIM, LEAN, IPD
Anna Guanter (SDIN Residencial)
Fernando Tortajada (TR Grupo)
Xavier Vilajoana (Grup Euroconstruc)
Chaired by:
Elena Pla (ITeC)

15.05.2019

10:00 am - 10:45 am
3D CAD and GIS web platform, pre-BIM web for civil engineering and construction
Antonio Pérez Carro (CIVIGNER)

11:00 am - 11:45 am
Co-existence between BIM and traditional systems
Ioanna Alsasua (SIMBIM)

12:00 pm - 12:45 pm
Measurements and budgets for multi-platform BIM
Ferran Bermejo (ITeC)
Elena Pla (ITeC)

1:00 pm - 1:45 pm
Open BIM: collaborative tools and platforms for carrying out a BIM process
Roberto Natale (ACCA Software)

4:00 pm - 6:00 pm
Product manufacturers and their entry into BIM
Albert Berenguel (BASF)
Jon Leguina (SALTOKI)
Antia Rodríguez (Batlle i Roig)
Chaired by:
Ferran Bermejo

16.05.2019

10:00 am - 10:45 am
BIM software map
Agusti Jardí (APOGEA)

11:00 am - 11:45 am
BIM in civil work for roads and railways
Ferran Camps (Catalan Government)

12:00 pm - 12:45 pm
BIM solutions and complex modelling with point clouds
Roberto Molinos (Modelical)

1:00 pm - 1:45 pm
Interoperability and project control with IFC formats
José Juan Márquez (Archicad)
Andrew Lopez (Solibri)

4:00 pm - 6:00 pm
Implementation of BIM in small and medium-sized enterprises
Andreu Iglesias (Sorigué)
Oriol Martí (Calaf Constructora)
Jordi Rosich (Bac Engineering)
Chaired by:
Francisco Dieguez

17.05.2019

10:00 - 10:45
From basic to advanced BIM
Julio Calle (ISCAR)

11:00 - 11:45
BIM and building facilities
Pablo Vicente (CAESOFI)

12:00 - 12:45
Spatial Computing. Take your model BIM for work with Virtual Reality and Augmented Reality
Iván Gómez (VT-Lab)

13:00 - 13:45
Visual Communication and BIM
Eugenio Donado (Lumion)

Side Events

We pooled efforts to enrich the contents and promote synergies.

Leading entities and associations from the sector organised seminars, talks and free courses during the trade show.



Programme

09 - 19.05

Barcelona's Architecture Week - 2019
Over these days Barcelona became the centre of a wide range of activities related to the world of architecture.

14.05

Reuse, recycle and redesign building
12:00 pm - 2:00 pm
Circular economy.

Organized by: Association of Surveyors, Technical Architects and Building Engineers of Barcelona (CAATEEB in its Catalan initials)

15.05

Pimec Fórum
9:00 am - 1:00 pm
New Trends in Public Procurement. Challenges and Opportunities for Businesses.

Organized by: PIMEC - Plataforma Pymes

Towards a decarbonized europe
9:00 am - 1:00 pm
3:00 pm - 6:00 pm
Financial models and integrate solutions for energy refurbishment of buildings.

Organized by: Catalonia Institute for Energy Research (IREC in its Catalan initials) and MED Efficient Building Community

New materials and technologies for energy efficient building / LEITAT
10:00 am - 2:30 pm
From new developments on building components to design and financing of EEB will be reviewed.

Organized by: LEITAT in collaboration with Expoquimia on the road

WELL workshop
10:30 am
Official workshop:
Introduction to WELL v2.

Organized by: Galicia Institute of Technology (ITG in its Spanish initials)

BREEAM, the sustainability standard with more than 15,000 residential units in Spain
12:30 pm - 1:30 pm
Creating value through sustainability. The benefits and costs associated with BREEAM implementation in building projects.

Organized by: BREEAM®

Third edition of the FISSAC living lab BCN
3:00 pm - 5:30 pm
Digital tools to identify synergies within the construction sector.

Organized by: Simbiosy

Event on large format ceramics in your renovation
3:00 pm - 8:00 pm
Technical conferences on the installation of large format ceramics.

Organized by: Tu Reforma

16.05

Digital skills
9:30 am - 5:00 pm
Digital skills: enablers of the European building stock's energy transition.

Organized by: BUILD UP

10:00 am - 2:00 pm
Digital transformation in the Construction sector. Technological challenges.

Organized by: Spanish Construction Technological Platform (PTEC in its Spanish initials)

BREEAM and construction materials
10:30 am - 11:30 am
How does BREEAM consider construction materials in its scoring?

Organized by: BREEAM®

WELL workshop
12:30 pm
Official workshop:
Introduction to WELL v2.

Organized by: Galicia Institute of Technology (ITG in its Spanish initials)

The spread of fire and fire prevention
4:00 pm - 6:00 pm
Safety manual for fire prevention by ENGINYERS BCN (passive protection) / A study on the problems generated by the spread of fire in building.

Organized by: Enginyers Industrials de Catalunya (Industrial Engineers of Catalonia) and Enginyers BCN

Fors 2019 identities | UIC barcelona
5:30 pm - 6:30 pm
Reflections on identity in contemporary architectural practice.

Organized by: UIC Barcelona

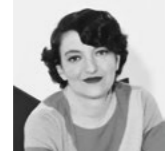
2019 Barcelona Building Construmat Awards

The most social and sustainable projects were the stars of the 18th Barcelona Building Construmat Awards, which, curated by the Mies van der Rohe Foundation for the second time, were presented at a gala held at the Roca Gallery venue in Barcelona.

Jury



Elena Orteu
Architect and Consultant in strategy and innovation for architecture studies, general director of the construction division of Search & Drive.



Izaskun Chinchilla
Phd in architecture. Researcher, professor at ETSA Madrid, IE Madrid and UCL London and founder of Izaskun Chinchilla Architects.



Rosa Grima
PhD in civil engineering. Innovation coordinator at Incasòl and president of the Dobooku, platform for the culture of design in public works.



David Basulto
David Basulto. Architect. Founder and chief editor of ArchDaily, the largest platform for the dissemination of online architecture projects and products.



José María Marzo
Architect. Director of Tectonics, architectural and construction magazine specialized in constructive solutions and products.

Curated by:



Winners of the 2019 edition



Progress, Provisions for Greater Reuse of Steel Structures
In the category of innovative project or service

ASCEM's winning project will provide methodologies, tools and recommendations on the reuse of steel-based components. The project focuses particularly on design for deconstruction and reuse. The benefits will be assessed from an environmental and economic point of view.



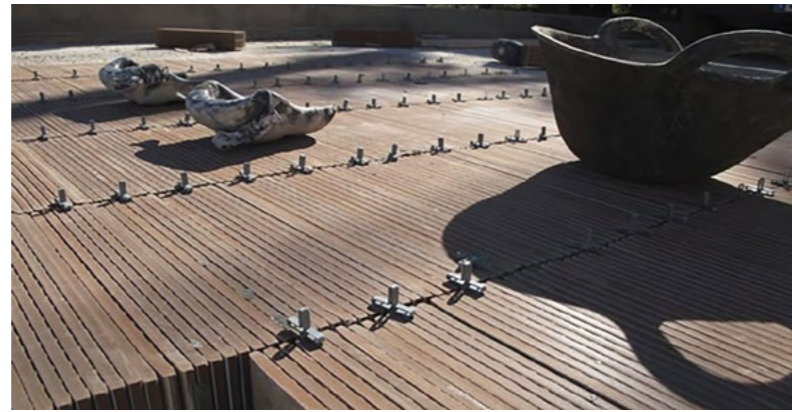
COAC Hall
In the BBConstrumat '19 stand category

It is capable of transversally uniting, inviting future architects to design their pavilion, collaborating with different specialists, programming a content that brings people together in architecture, with architects, in an active and collaborative way.



La Borda Housing Cooperative
Category of built work - Architecture

For a global understanding of the impact of environmental and social innovation and for its application to each and every stage of the project.



SUDS System
In the category of innovative product or material

Flooring for urban spaces that is manufactured by reusing stored ceramics of low commercial value and which consists of cutting the tiles into strips to join their faces with a cement adhesive. The surface of this new material makes flooring with a high drainage capacity that is easy to install.



Les Hortes de Caldes and Plaça del Sindicat Parking
In the category of constructed works - Infrastructure

The project integrates the roof with the adjacent gardens, makes it accessible and uses local materials for the different structures, thus opening the door to adapting the space in the future to new needs.

Jury's mentions



Sustainable Wood Construction
Category: Innovative product or material

The University of Cordoba, PEFC and other partners invite architects, contractors, manufacturers and other agents in the sector to contribute to the development of this material.



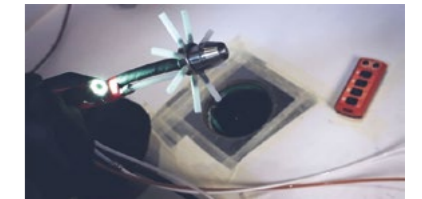
Simbiótica: Therapeutic Environments, from Simbiótica
Category: Innovative product or material.

For connecting with nature in order to reach optimal levels of both physical and emotional comfort.



CESSAR, from the Institute of Multidisciplinary Mathematics of the UPV (Polytechnic University of Valencia)
Category: Innovative project or service

New system to measure in situ, and even predict, the compressive strength of concrete.



Hidrotec Sanajament Sprayform
Category: Innovative product or material

Rehabilitation system for pipes and downpipes that consists of projecting a special polymer inside, using the old pipe as lost formwork. This avoids carrying out demolition work and generating rubble.



Packaging machinery from Controlpack System
Category: Innovative product or material

Applying innovative technology to reduce the amount of plastic used from 20% to 60%. This significantly reduces the environmental impact of packaging of construction products.



Nodoled, 5V LED
Category: Innovative product or material

Industrial LED lighting with built-in sensors that capture data from its environment and communication devices so that it can create a network that transfers data to the cloud.



Master Suna, from BASF Construction Chemicals
Category: Innovative product or material

Additive for concrete that allows the use of sands with a greater quantity of clay, avoiding excesses in the concrete and reducing or even avoiding the washing of these sands. More efficient use of natural resources and a reduction of the CO2 footprint are achieved.



Manta Hospital
Category: Constructed Work - Infrastructure

For understanding the hospital infrastructure as the coordinator of the territory and adapting to the needs of a crisis to optimise the speed of construction and durability of the project.



Cycle and pedestrian route between Barcelona and Esplugues de Llobregat, promoted by the AMB
Category: Constructed Work - Infrastructure

For the value of promoting a project despite the difficulties, that improves one of the seams of our city and restores it to be used by everyone.



Elisa Technology Prototype
Category: Constructed Work - Infrastructure

This project, the first offshore wind turbine in Spain, has been able to adapt known solutions to this new challenge. Producing a self-floating foundation that can be manufactured in port, thus reducing impact and time.



VII-la Urània Civic Centre
Category: Constructed Work - Infrastructure

For the interesting activation of collective spaces through air conditioning, spatial conditioning and materiality.



Can Rosés Seasonal School
Category: Constructed Work - Infrastructure

For exploring innovative management formulas, with a deep and holistic vision of sustainability.



La arboleda del Sur
Category: Constructed Work - Infrastructure

For the coherence between the use of technology and the careful implementation strategy.

Towards a more sustainable event

Sustainable Barcelona Building Construmat is an initiative launched by the trade show organisers with the goal of reducing the generation of waste and increasing the efficient use of our resources, working on a strategic plan to make our cities more efficient, inclusive and sustainable.

It is based on the three main ways to generate less waste in line with the strategy of the European Commission on the Circular Economy:

- Cutting down on the use of materials
- Reusing and recycling products
- Not generating food waste

The design and construction of the communal areas of BBConstrumat 2019 provided an example of the circular economy

In keeping with the tradition of previous years, we continued to promote highly original, inspiring and sustainable ephemeral architecture. In 2019 Josep Ferrando's studio was commissioned to design more than 3,000 m² of communal areas.

The design had to comply with the objectives of a temporary construction, generating as little waste as possible from the perspective of reuse and sustainability.

The project that was created, inspired by a basilica, was made with only two construction materials: large white awnings and beams used as benches or counters.

The project was carried out in collaboration with the Construction Board of the Sagrada Família of Barcelona, which lent some of the large beams used as support to transport the panels comprising the towers of Antoni Gaudí's work and were reused after the trade show had taken place for the work to complete the basilica.

The large white canvases were made of geotextiles supplied by Soprema and were reused for other projects after the event. The stands and stages were provided by Layher, the assembly machinery by Germans Homs and the plants by the Nebralejo Group.

Strategic partners in sustainability:



Use fewer materials

Distribute QR codes in strategic places of the venue to download the app, thus promoting electronic management and avoiding the use of paper. Introduce electronic management in billing and service subscription procedures.

We reuse

At the end of the event, all the paper and material used in the stands and exhibition areas will be collected so that it can be reused. You can arrange for the donation of material from your stand with the Hall Operations Manager at 678463894 or by sending an email to opalau2m2@firabarcelona.com

We ensure carbon neutrality

Compensation of GHG emissions associated with the organisation of the event and the participation of all speakers (including travel and time spent in Barcelona) by funding high quality carbon offset projects.

No need for carpeting in the fair

At the event, it was decided not to lay carpet to reduce the total volume of waste generated, the environmental footprint and the CO2 emissions related to the transport of this material.

Sustainable Partners:



“BBConstrumat or how to build sustainably”.

La Razón



2019 figures

“The quality and professional level of the visitors has increased this year.”

Javier Sánchez
Director Aislux Norte

“The profiles of the professionals who have visited us has been very high: engineers, architects, city councils, provincial councils.”

Joan Pons
Director of Innovation Sorigué

Visitors

54,368

Visitors

79%

Recommend the trade show

93%

Are involved in the purchasing process

102

Countries

75%

Will return in 2021

61%

Are interested in innovation and new products

81%

Influencers, constructors and architecture, engineering and interior design professionals

73%

Have seen their business expectations fulfilled

Exhibitors

+34%

Increase in exhibition space compared to 2017

425

Exhibiting companies

1,062

Brands represented

Partners

Global partners



Event partners



Institutions



Associations



Professional Associations



With the collaboration of



Content partners



Strategic partner in sustainability



Partners

Sustainable partners



Technology Centers



Official media partners



Supporting media partners



